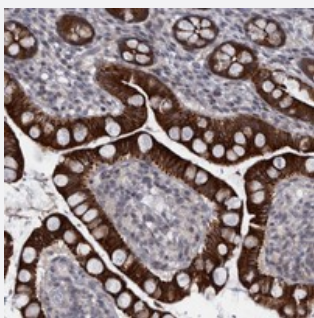


C1orf107 polyclonal antibody

Catalog # PAB21818 Size 100 uL

Applications



Immunohistochemistry (Formalin/PFA-fixed paraffin-embedded sections)

Immunohistochemical staining of human small intestine with C1orf107 polyclonal antibody (Cat # PAB21818) strong cytoplasmic positivity in glandular cells at 1:50-1:200 dilution.

Specification

Product Description	Rabbit polyclonal antibody raised against recombinant C1orf107.
Immunogen	Recombinant protein corresponding to amino acids of human C1orf107.
Sequence	LLPLDSHGVD FSRVRMWSLNNWSKYRQTLLFGALQDAQINSVFNKYCVNMQGQVAVRNPMT GSISHVLVQLPHVFQRMEAENLASVIDARFNFFVNKILPQYRDAVM
Host	Rabbit
Reactivity	Human
Form	Liquid
Purification	Antigen affinity purification
Isotype	IgG
Recommend Usage	Immunohistochemistry (1:50-1:200) The optimal working dilution should be determined by the end user.
Storage Buffer	In PBS, pH 7.2 (40% glycerol, 0.02% sodium azide)

Storage Instruction

Store at 4°C. For long term storage store at -20°C.
Aliquot to avoid repeated freezing and thawing.

Note

This product contains sodium azide: a POISONOUS AND HAZARDOUS SUBSTANCE which should be handled by trained staff only.

Applications

- Immunohistochemistry (Formalin/PFA-fixed paraffin-embedded sections)

Immunohistochemical staining of human small intestine with C1orf107 polyclonal antibody (Cat # PAB21818) strong cytoplasmic positivity in glandular cells at 1:50-1:200 dilution.

Gene Info — C1orf107

Entrez GeneID[27042](#)**Protein Accession#**[Q68CQ4](#)**Gene Name**

C1orf107

Gene Alias

DEF, DJ434O14.5, DKFZp686E19106, FLJ12704, FLJ41680, MGC29875

Gene Description

chromosome 1 open reading frame 107

Gene Ontology[Hyperlink](#)**Other Designations**

OTTHUMP00000034820|digestive-organ expansion factor homolog