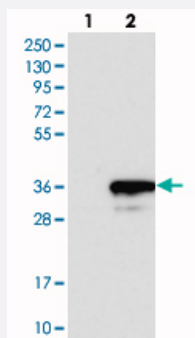


GINS4 polyclonal antibody

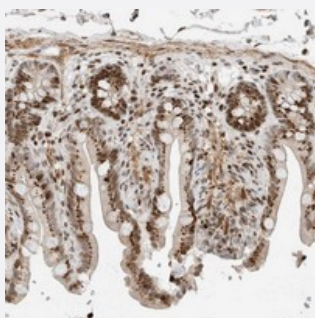
Catalog # PAB21813 Size 100 uL

Applications



Western Blot (Transfected lysate)

Western blot analysis of Lane 1: Negative control (vector only transfected HEK293T lysate), Lane 2: Over-expression Lysate (Co-expressed with a C-terminal myc-DDK tag (~3.1 kDa) in mammalian HEK293T cells) with GINS4 polyclonal antibody (Cat # PAB21813).



Immunohistochemistry (Formalin/PFA-fixed paraffin-embedded sections)

Immunohistochemical staining of human colon with GINS4 polyclonal antibody (Cat # PAB21813) shows strong nuclear positivity combined with distinct granular cytoplasmic staining in glandular cells.

Specification

| | |
|---------------------|--|
| Product Description | Rabbit polyclonal antibody raised against recombinant GINS4. |
| Immunogen | Recombinant protein corresponding to amino acids of human GINS4. |
| Sequence | VSIHQMEMERIRYVLSSYLRCLMKIEKFFPHVLEKEKTRPEGEPSSLSPEELAFAREFMANTESY LK |
| Host | Rabbit |
| Reactivity | Human |
| Form | Liquid |

| | |
|---------------------|--|
| Purification | Antigen affinity purification |
| Isotype | IgG |
| Recommend Usage | Immunohistochemistry (1:200-1:500) Western Blot (1:250-1:500) The optimal working dilution should be determined by the end user. |
| Storage Buffer | In PBS, pH 7.2 (40% glycerol, 0.02% sodium azide) |
| Storage Instruction | Store at 4°C. For long term storage store at -20°C. Aliquot to avoid repeated freezing and thawing. |
| Note | This product contains sodium azide: a POISONOUS AND HAZARDOUS SUBSTANCE which should be handled by trained staff only. |

Applications

- Western Blot (Transfected lysate)

Western blot analysis of Lane 1: Negative control (vector only transfected HEK293T lysate), Lane 2: Over-expression Lysate (Co-expressed with a C-terminal myc-DDK tag (~3.1 kDa) in mammalian HEK293T cells) with GINS4 polyclonal antibody (Cat # PAB21813).

- Immunohistochemistry (Formalin/PFA-fixed paraffin-embedded sections)

Immunohistochemical staining of human colon with GINS4 polyclonal antibody (Cat # PAB21813) shows strong nuclear positivity combined with distinct granular cytoplasmic staining in glandular cells.

Gene Info — GINS4

| | |
|--------------------|---------------------------------------|
| Entrez GeneID | 84296 |
| Protein Accession# | Q9BRT9 |
| Gene Name | GINS4 |
| Gene Alias | MGC14799, SLD5 |
| Gene Description | GINS complex subunit 4 (Sld5 homolog) |
| Omim ID | 610611 |
| Gene Ontology | Hyperlink |

Gene Summary

The yeast heterotetrameric GINS complex is made up of Sld5, Psf1 (GINS1; MIM 610608), Psf2 (GINS2; MIM 610609), and Psf3 (GINS3; MIM 610610). The formation of the GINS complex is essential for the initiation of DNA replication in yeast and Xenopus egg extracts (Ueno et al., 2005 [PubMed 16287864]). See GINS1 for additional information about the GINS complex.[supplied by OMIM]

Other Designations

GINS complex subunit 4|SLD5 homolog