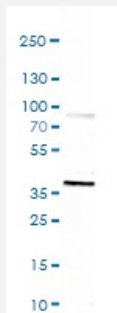


EBNA1BP2 polyclonal antibody

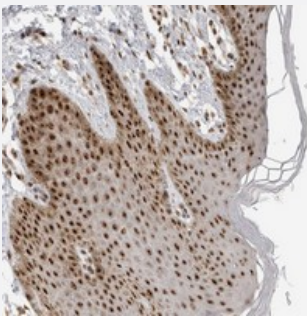
Catalog # PAB21801 Size 100 uL

Applications



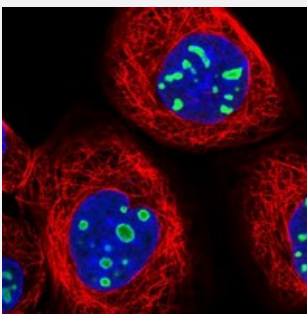
Western Blot

Western blot analysis in human cell line U-251 MG.



Immunohistochemistry (Formalin/PFA-fixed paraffin-embedded sections)

Immunohistochemical staining of human vulva/anal skin with EBNA1BP2 polyclonal antibody (Cat # PAB21801) shows strong nuclear positivity in squamous epithelial cells at 1:20-1:50 dilution.



Immunofluorescence

Immunofluorescent staining of human cell line A-431 with EBNA1BP2 polyclonal antibody (Cat # PAB21801) at 1-4 ug/mL dilution shows positivity in nucleoli.

Specification

Product Description

Rabbit polyclonal antibody raised against recombinant EBNA1BP2.

Immunogen

Recombinant protein corresponding to amino acids of human EBNA1BP2.

Sequence	ESDESLVTDRELQDAFSRGLLKPGLNVVLEGPKKAVNDVNLKQCLAEFKRDLEWVERLDVTL GPVPEIGGSEAPAPQNKDQKAVDPEDD
Host	Rabbit
Reactivity	Human
Form	Liquid
Purification	Antigen affinity purification
Isotype	IgG
Recommend Usage	Immunohistochemistry (1:20-1:50) Western Blot (1:250-1:500) Immunofluorescence (1-4 ug/mL) The optimal working dilution should be determined by the end user.
Storage Buffer	In PBS, pH 7.2 (40% glycerol, 0.02% sodium azide)
Storage Instruction	Store at 4°C. For long term storage store at -20°C. Aliquot to avoid repeated freezing and thawing.
Note	This product contains sodium azide: a POISONOUS AND HAZARDOUS SUBSTANCE which should be handled by trained staff only.

Applications

- Western Blot

Western blot analysis in human cell line U-251 MG.

- Immunohistochemistry (Formalin/PFA-fixed paraffin-embedded sections)

Immunohistochemical staining of human vulva/anal skin with EBNA1BP2 polyclonal antibody (Cat # PAB21801) shows strong nuclear positivity in squamous epithelial cells at 1:20-1:50 dilution.

- Immunofluorescence

Immunofluorescent staining of human cell line A-431 with EBNA1BP2 polyclonal antibody (Cat # PAB21801) at 1-4 ug/mL dilution shows positivity in nucleoli.

Gene Info — EBNA1BP2

Entrez GeneID [10969](#)

Protein Accession# [Q99848](#)

Gene Name	EBNA1BP2
Gene Alias	EBP2, NOBP, P40
Gene Description	EBNA1 binding protein 2
Gene Ontology	Hyperlink
Other Designations	EBNA1-binding protein 2 OTTHUMP00000008354 nuclear FGF3 binding protein nucleolar protein p40; homolog of yeast EBNA1-binding protein

Publication Reference

- [Substrate-specific presentation of MHC class I-restricted antigens via autophagy pathway.](#)

Maria C Tovar Fernandez, Ewa M Sroka, Mathilde Lavigne, Aikaterini Thermou, Chrysoula Daskalogianni, Bénédicte Manoury, Rodrigo Prado Martins, Robin Fahraeus.

Cellular Immunology 2022 Apr; 374:104484.

Application: IF, WB-Tr, Human, H1299 cells