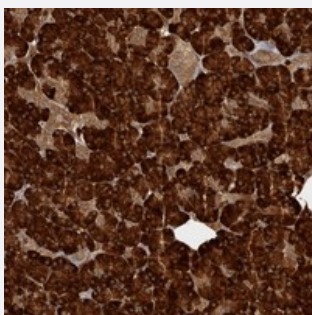


CAMSAP2 polyclonal antibody

Catalog # PAB21796 Size 100 uL

Applications



Immunohistochemistry (Formalin/PFA-fixed paraffin-embedded sections)

Immunohistochemical staining of human pancreas with CAMSAP2 polyclonal antibody (Cat # PAB21796) shows strong cytoplasmic positivity in exocrine cells at 1:50-1:200 dilution.

Specification

Product Description	Rabbit polyclonal antibody raised against recombinant CAMSAP2.
Immunogen	Recombinant protein corresponding to amino acids of human CAMSAP2.
Sequence	SSVHGVSFDISFDKEDSVQRSTPNRGITRSISNEGLTLNNSHVSKHIRKNLSFKPINGEEEAESIEE ELNIDSHSDLKSCVPL
Host	Rabbit
Reactivity	Human
Form	Liquid
Purification	Antigen affinity purification
Isotype	IgG
Recommend Usage	Immunohistochemistry (1:50-1:200) The optimal working dilution should be determined by the end user.
Storage Buffer	In PBS, pH 7.2 (40% glycerol, 0.02% sodium azide)

Storage Instruction

Store at 4°C. For long term storage store at -20°C.
Aliquot to avoid repeated freezing and thawing.

Note

This product contains sodium azide: a POISONOUS AND HAZARDOUS SUBSTANCE which should be handled by trained staff only.

Applications

- Immunohistochemistry (Formalin/PFA-fixed paraffin-embedded sections)

Immunohistochemical staining of human pancreas with CAMSAP2 polyclonal antibody (Cat # PAB21796) shows strong cytoplasmic positivity in exocrine cells at 1:50-1:200 dilution.

Gene Info — CAMSAP2

Entrez GeneID[23271](#)**Protein Accession#**[Q08AD1](#)**Gene Name**

CAMSAP2

Gene Alias

RP11-93N17.1, CAMSAP1L1

Gene Description

calmodulin regulated spectrin-associated protein family, member 2

Gene Ontology[Hyperlink](#)**Gene Summary**

calmodulin regulated spectrin-associated protein 1-like 1; calmodulin-regulated spectrin-associated protein 1-like protein 1; calmodulin-regulated spectrin-associated protein 2

Other Designations

calmodulin regulated spectrin-associated protein 1-like 1; calmodulin-regulated spectrin-associated protein 1-like protein 1; calmodulin-regulated spectrin-associated protein 2