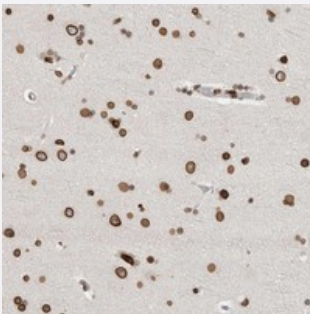


# CDCA2 polyclonal antibody

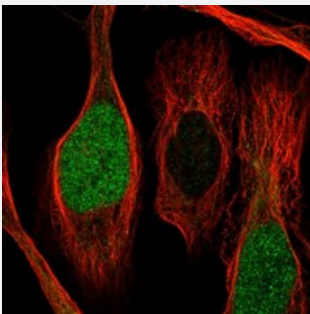
Catalog # PAB21795      Size 100 uL

## Applications



### Immunohistochemistry (Formalin/PFA-fixed paraffin-embedded sections)

Immunohistochemical staining of human cerebral cortex with CDCA2 polyclonal antibody (Cat # PAB21795) shows strong nuclear and nuclear membrane positivity in neurons and glial cells.



### Immunofluorescence

Immunofluorescent staining of human cell line U-2 OS with CDCA2 polyclonal antibody (Cat # PAB21795) at 1-4 ug/mL dilution shows positivity in nuclei but not nucleoli.

## Specification

Product Description	Rabbit polyclonal antibody raised against recombinant CDCA2.
Immunogen	Recombinant protein corresponding to amino acids of human CDCA2.
Sequence	VLSSKRRRISYQRSDENLTDAEGKVIGLQIFNIDTRACAVETSVDLSEISSKLGSTQSGFLVEES LPLSELTETSNALKVADCVVGKGSS
Host	Rabbit
Reactivity	Human
Form	Liquid

Purification	Antigen affinity purification
Isotype	IgG
Recommend Usage	Immunohistochemistry (1:200-1:500) Immunofluorescence (1-4 ug/mL) The optimal working dilution should be determined by the end user.
Storage Buffer	In PBS, pH 7.2 (40% glycerol, 0.02% sodium azide)
Storage Instruction	Store at 4°C. For long term storage store at -20°C. Aliquot to avoid repeated freezing and thawing.
Note	This product contains sodium azide: a POISONOUS AND HAZARDOUS SUBSTANCE which should be handled by trained staff only.

## Applications

- Immunohistochemistry (Formalin/PFA-fixed paraffin-embedded sections)

Immunohistochemical staining of human cerebral cortex with CDCA2 polyclonal antibody (Cat # PAB21795) shows strong nuclear and nuclear membrane positivity in neurons and glial cells.

- Immunofluorescence

Immunofluorescent staining of human cell line U-2 OS with CDCA2 polyclonal antibody (Cat # PAB21795) at 1-4 ug/mL dilution shows positivity in nuclei but not nucleoli.

## Gene Info — CDCA2

Entrez GeneID	<a href="#">157313</a>
Protein Accession#	<a href="#">Q69YH5</a>
Gene Name	CDCA2
Gene Alias	FLJ25804, MGC129906, MGC129907, Repo-Man
Gene Description	cell division cycle associated 2
Gene Ontology	<a href="#">Hyperlink</a>
Other Designations	protein phosphatase 1 [gamma] (PPP1R3A) binding protein Repo-Man

## Disease

- [Tobacco Use Disorder](#)