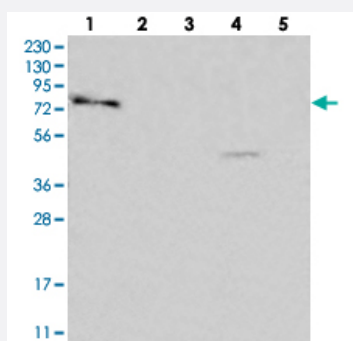


SYTL5 polyclonal antibody

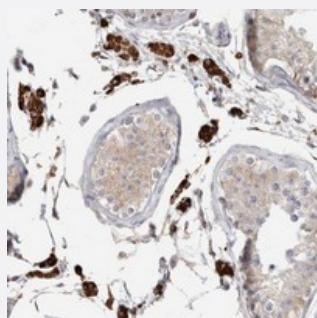
Catalog # PAB21790 Size 100 uL

Applications



Western Blot

Western blot analysis of Lane 1: RT-4, Lane 2: U-251 MG, Lane 3: Human Plasma, Lane 4: Liver, Lane 5: Tonsil with SYTL5 polyclonal antibody (Cat # PAB21790) at 1:250-1:500 dilution.



Immunohistochemistry (Formalin/PFA-fixed paraffin-embedded sections)

Immunohistochemical staining of human testis with SYTL5 polyclonal antibody (Cat # PAB21790) shows strong cytoplasmic positivity in Leydig cells at 1:50-1:200 dilution.

Specification

Product Description	Rabbit polyclonal antibody raised against recombinant SYTL5.
Immunogen	Recombinant protein corresponding to amino acids of human SYTL5.
Sequence	KQVNVLGTDVVRQSILRRSPAEEVQSSEQTRQDAEKSDTSPVAGKKASHDGPKRKGFLLSKFR SATRGEIITPKTDTGRSYSLDLGQHFRLSKSPPGSDRGSTGSSDLNDQEP
Host	Rabbit
Reactivity	Human
Form	Liquid

Purification	Antigen affinity purification
Isotype	IgG
Recommend Usage	Immunohistochemistry (1:50-1:200) Western Blot (1:250-1:500) The optimal working dilution should be determined by the end user.
Storage Buffer	In PBS, pH 7.2 (40% glycerol, 0.02% sodium azide)
Storage Instruction	Store at 4°C. For long term storage store at -20°C. Aliquot to avoid repeated freezing and thawing.
Note	This product contains sodium azide: a POISONOUS AND HAZARDOUS SUBSTANCE which should be handled by trained staff only.

Applications

- Western Blot

Western blot analysis of Lane 1: RT-4, Lane 2: U-251 MG, Lane 3: Human Plasma, Lane 4: Liver, Lane 5: Tonsil with SYTL5 polyclonal antibody (Cat # PAB21790) at 1:250-1:500 dilution.

- Immunohistochemistry (Formalin/PFA-fixed paraffin-embedded sections)

Immunohistochemical staining of human testis with SYTL5 polyclonal antibody (Cat # PAB21790) shows strong cytoplasmic positivity in Leydig cells at 1:50-1:200 dilution.

Gene Info — SYTL5

Entrez GeneID	94122
Protein Accession#	Q8TDW5
Gene Name	SYTL5
Gene Alias	slp5
Gene Description	synaptotagmin-like 5
Gene Ontology	Hyperlink
Gene Summary	The protein encoded by this gene belongs to the synaptotagmin-like (Slp) protein family, which contains a unique homology domain at the N-terminus, referred to as the Slp homology domain (SHD). The SHD functions as a binding site for Rab27A, which plays a role in protein transport. Expression of this gene is restricted to placenta and liver, suggesting that it might be involved in Rab27A-dependent membrane trafficking in specific tissues. Alternatively spliced transcript variants encoding different isoforms have been found for this gene. [provided by RefSeq]

Other DesignationsOTTHUMP00000031916|exophilin 9
