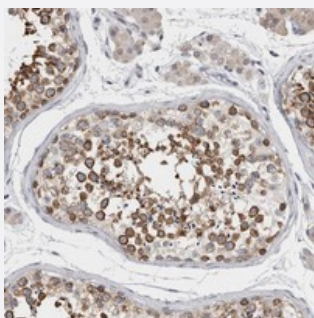


TMEM242 polyclonal antibody

Catalog # PAB21783 Size 100 uL

Applications



Immunohistochemistry (Formalin/PFA-fixed paraffin-embedded sections)

Immunohistochemical staining of human testis with TMEM242 polyclonal antibody (Cat # PAB21783) shows strong cytoplasmic positivity in cells in seminiferous ducts.

Specification

Product Description	Rabbit polyclonal antibody raised against recombinant TMEM242.
Immunogen	Recombinant protein corresponding to amino acids of human TMEM242.
Sequence	METAGAATGQPASGLEAPGSTNDRL
Host	Rabbit
Reactivity	Human
Form	Liquid
Purification	Antigen affinity purification
Isotype	IgG
Recommend Usage	Immunohistochemistry (1:20-1:50) The optimal working dilution should be determined by the end user.
Storage Buffer	In PBS, pH 7.2 (40% glycerol, 0.02% sodium azide)
Storage Instruction	Store at 4°C. For long term storage store at -20°C. Aliquot to avoid repeated freezing and thawing.

Note

This product contains sodium azide: a POISONOUS AND HAZARDOUS SUBSTANCE which should be handled by trained staff only.

Applications

- Immunohistochemistry (Formalin/PFA-fixed paraffin-embedded sections)

Immunohistochemical staining of human testis with TMEM242 polyclonal antibody (Cat # PAB21783) shows strong cytoplasmic positivity in cells in seminiferous ducts.

Gene Info — TMEM242

Entrez GeneID	729515
---------------	------------------------

Protein Accession#	Q9NWH2
--------------------	------------------------

Gene Name	TMEM242
-----------	---------

Gene Alias	RP11-96F3.3, BM033, C6orf35
------------	-----------------------------

Gene Description	transmembrane protein 242
------------------	---------------------------

Gene Ontology	Hyperlink
---------------	---------------------------

Other Designations	UPF0463 transmembrane protein C6orf35
--------------------	---------------------------------------