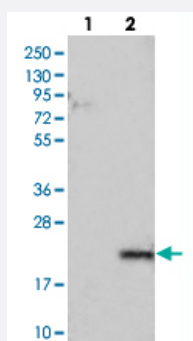


LYZL6 polyclonal antibody

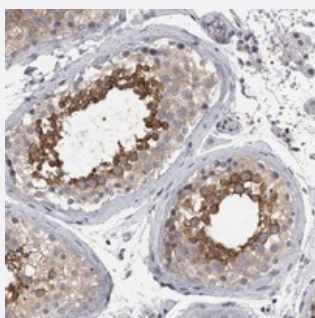
Catalog # PAB21780 Size 100 uL

Applications



Western Blot (Transfected lysate)

Western blot analysis of Lane 1: Negative control (vector only transfected HEK293T lysate), Lane 2: Over-expression Lysate (Co-expressed with a C-terminal myc-DDK tag (~3.1 kDa) in mammalian HEK293T cells) with LYZL6 polyclonal antibody (Cat # PAB21780).



Immunohistochemistry (Formalin/PFA-fixed paraffin-embedded sections)

Immunohistochemical staining of human testis with LYZL6 polyclonal antibody (Cat # PAB21780) shows strong cytoplasmic positivity in subsets of seminiferous duct cells.

Specification

Product Description	Rabbit polyclonal antibody raised against recombinant LYZL6.
Immunogen	Recombinant protein corresponding to amino acids of human LYZL6.
Sequence	CNDYKSYSENLC HVDCQDLLNP NLLAGIHCAKRIVSGARGMNNWVEWRLHCSGRP
Host	Rabbit
Reactivity	Human
Form	Liquid
Purification	Antigen affinity purification

Isotype	IgG
Recommend Usage	Immunohistochemistry (1:20-1:50) Western Blot (1:250-1:500) The optimal working dilution should be determined by the end user.
Storage Buffer	In PBS, pH 7.2 (40% glycerol, 0.02% sodium azide)
Storage Instruction	Store at 4°C. For long term storage store at -20°C. Aliquot to avoid repeated freezing and thawing.
Note	This product contains sodium azide: a POISONOUS AND HAZARDOUS SUBSTANCE which should be handled by trained staff only.

Applications

- Western Blot (Transfected lysate)

Western blot analysis of Lane 1: Negative control (vector only transfected HEK293T lysate), Lane 2: Over-expression Lysate (Co-expressed with a C-terminal myc-DDK tag (~3.1 kDa) in mammalian HEK293T cells) with LYZL6 polyclonal antibody (Cat # PAB21780).

- Immunohistochemistry (Formalin/PFA-fixed paraffin-embedded sections)

Immunohistochemical staining of human testis with LYZL6 polyclonal antibody (Cat # PAB21780) shows strong cytoplasmic positivity in subsets of seminiferous duct cells.

Gene Info — LYZL6

Entrez GeneID	57151
Protein Accession#	O75951
Gene Name	LYZL6
Gene Alias	1700023H08Rik, LYC1, PRO1485, TKAL754
Gene Description	lysozyme-like 6
Gene Ontology	Hyperlink
Gene Summary	Lysozymes (see LYZ; MIM 153450), especially C-type lysozymes, are well-recognized bacteriolytic factors widely distributed in the animal kingdom and play a mainly protective role in host defense. LYZL6 is a member of a family of lysozyme-like genes (Zhang et al., 2005 [PubMed 16014814]).[supplied by OMIM]
Other Designations	OTTHUMP00000163949 lysozyme homolog