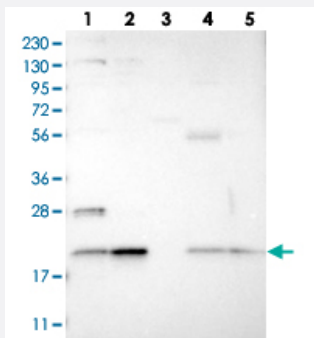


TMEM65 polyclonal antibody

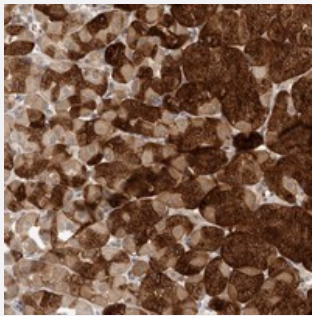
Catalog # PAB21754 Size 100 uL

Applications



Western Blot

Western blot analysis of Lane 1: RT-4, Lane 2: U-251 MG, Lane 3: Human Plasma, Lane 4: Liver, Lane 5: Tonsil with TMEM65 polyclonal antibody (Cat # PAB21754) at 1:250-1:500 dilution.



Immunohistochemistry (Formalin/PFA-fixed paraffin-embedded sections)

Immunohistochemical staining of human stomach with TMEM65 polyclonal antibody (Cat # PAB21754) strong cytoplasmic positivity in glandular cells at 1:50-1:200 dilution.

Specification

Product Description	Rabbit polyclonal antibody raised against recombinant TMEM65.
Immunogen	Recombinant protein corresponding to amino acids of human TMEM65.
Sequence	EALNTAQGARDFYSLHSTERSCLLKELHRFESIAIAQEKLEAPPPT
Host	Rabbit
Reactivity	Human
Form	Liquid
Purification	Antigen affinity purification

Isotype	IgG
Recommend Usage	Immunohistochemistry (1:50-1:200) Western Blot (1:250-1:500) The optimal working dilution should be determined by the end user.
Storage Buffer	In PBS, pH 7.2 (40% glycerol, 0.02% sodium azide)
Storage Instruction	Store at 4°C. For long term storage store at -20°C. Aliquot to avoid repeated freezing and thawing.
Note	This product contains sodium azide: a POISONOUS AND HAZARDOUS SUBSTANCE which should be handled by trained staff only.

Applications

- Western Blot

Western blot analysis of Lane 1: RT-4, Lane 2: U-251 MG, Lane 3: Human Plasma, Lane 4: Liver, Lane 5: Tonsil with TMEM65 polyclonal antibody (Cat # PAB21754) at 1:250-1:500 dilution.

- Immunohistochemistry (Formalin/PFA-fixed paraffin-embedded sections)

Immunohistochemical staining of human stomach with TMEM65 polyclonal antibody (Cat # PAB21754) strong cytoplasmic positivity in glandular cells at 1:50-1:200 dilution.

Gene Info — TMEM65

Entrez GeneID	157378
Protein Accession#	Q6PI78
Gene Name	TMEM65
Gene Alias	-
Gene Description	transmembrane protein 65
Gene Ontology	Hyperlink
Other Designations	-