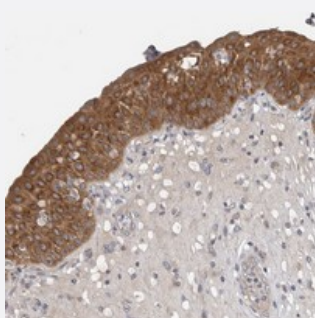


COL22A1 polyclonal antibody

Catalog # PAB21752 Size 100 uL

Applications



Immunohistochemistry (Formalin/PFA-fixed paraffin-embedded sections)

Immunohistochemical staining of human urinary bladder with COL22A1 polyclonal antibody (Cat # PAB21752) shows strong cytoplasmic positivity in urothelial cells at 1:200-1:500 dilution.

Specification

| | |
|----------------------------|--|
| Product Description | Rabbit polyclonal antibody raised against recombinant COL22A1. |
| Immunogen | Recombinant protein corresponding to amino acids of human COL22A1. |
| Sequence | LKEELEEEIASEPKSAHV FHVSDFN AIDKIRGKLRRRLCENVLCPSVRVEGDRFKHTNGGTKEITGF DLMDLFSVKEILGKRENGAQSSYVRMG |
| Host | Rabbit |
| Reactivity | Human |
| Form | Liquid |
| Purification | Antigen affinity purification |
| Isotype | IgG |
| Recommend Usage | Immunohistochemistry (1:200-1:500) The optimal working dilution should be determined by the end user. |
| Storage Buffer | In PBS, pH 7.2 (40% glycerol, 0.02% sodium azide) |

Storage Instruction

Store at 4°C. For long term storage store at -20°C.
Aliquot to avoid repeated freezing and thawing.

Note

This product contains sodium azide: a POISONOUS AND HAZARDOUS SUBSTANCE which should be handled by trained staff only.

Applications

- Immunohistochemistry (Formalin/PFA-fixed paraffin-embedded sections)

Immunohistochemical staining of human urinary bladder with COL22A1 polyclonal antibody (Cat # PAB21752) shows strong cytoplasmic positivity in urothelial cells at 1:200-1:500 dilution.

Gene Info — COL22A1

Entrez GeneID[169044](#)**Protein Accession#**[Q8NFW1](#)**Gene Name**

COL22A1

Gene Alias

-

Gene Description

collagen, type XXII, alpha 1

Omim ID[610026](#)**Gene Ontology**[Hyperlink](#)**Gene Summary**

COL22A1, a member of the FACIT (fibrillar-associated collagens with interrupted triple helices) subgroup of the collagen protein family, specifically localizes to tissue junctions (Koch et al., 2004 [PubMed 15016833]).[supplied by OMIM]

Other Designations

-

Disease

- [Tobacco Use Disorder](#)