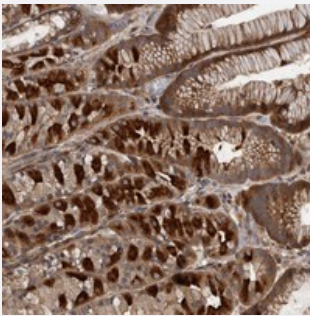


# XKR6 polyclonal antibody

Catalog # PAB21751      Size 100 uL

## Applications



### Immunohistochemistry (Formalin/PFA-fixed paraffin-embedded sections)

Immunohistochemical staining of human stomach with XKR6 polyclonal antibody (Cat # PAB21751) shows strong cytoplasmic positivity in subsets of glandular cells at 1:200-1:500 dilution.

## Specification

<b>Product Description</b>	Rabbit polyclonal antibody raised against recombinant XKR6.
<b>Immunogen</b>	Recombinant protein corresponding to amino acids of human XKR6.
<b>Sequence</b>	YGV LHPTGPRAKILASSCCAELLWGIPLPPDVEPMAPEIPGYRGTQVTPTRAVTEQQEDLTADTCL PVFQVRPMGPPTPLGRPYLEGPLIKIDMPR
<b>Host</b>	Rabbit
<b>Reactivity</b>	Human
<b>Form</b>	Liquid
<b>Purification</b>	Antigen affinity purification
<b>Isotype</b>	IgG
<b>Recommend Usage</b>	Immunohistochemistry (1:200-1:500) The optimal working dilution should be determined by the end user.
<b>Storage Buffer</b>	In PBS, pH 7.2 (40% glycerol, 0.02% sodium azide)

**Storage Instruction**

Store at 4°C. For long term storage store at -20°C.  
Aliquot to avoid repeated freezing and thawing.

**Note**

This product contains sodium azide: a POISONOUS AND HAZARDOUS SUBSTANCE which should be handled by trained staff only.

## Applications

- Immunohistochemistry (Formalin/PFA-fixed paraffin-embedded sections)

Immunohistochemical staining of human stomach with XKR6 polyclonal antibody (Cat # PAB21751) shows strong cytoplasmic positivity in subsets of glandular cells at 1:200-1:500 dilution.

## Gene Info — XKR6

**Entrez GeneID**[286046](#)**Protein Accession#**[Q5GH73](#)**Gene Name**

XKR6

**Gene Alias**

C8orf21, C8orf7, XRG6

**Gene Description**

XK, Kell blood group complex subunit-related family, member 6

**Gene Ontology**[Hyperlink](#)**Gene Summary**

Kell blood group complex subunit-related family

**Other Designations**

X Kell blood group precursor-related family, member 6|XK-related protein 6

## Disease

- [Dyslipidemias](#)
- [Hypertriglyceridemia](#)