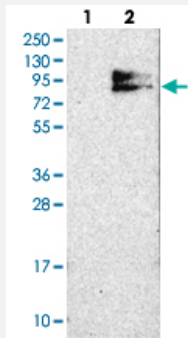


SLC28A3 polyclonal antibody

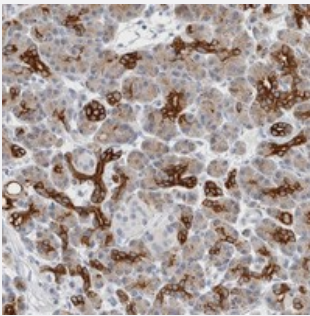
Catalog # PAB21742 Size 100 uL

Applications



Western Blot (Transfected lysate)

Western blot analysis of Lane 1: Negative control (vector only transfected HEK293T lysate), Lane 2: Over-expression Lysate (Co-expressed with a C-terminal myc-DDK tag (~3.1 kDa) in mammalian HEK293T cells) with SLC28A3 polyclonal antibody (Cat # PAB21742).



Immunohistochemistry (Formalin/PFA-fixed paraffin-embedded sections)

Immunohistochemical staining of human pancreas with SLC28A3 polyclonal antibody (Cat # PAB21742) shows strong cytoplasmic positivity in intercalated duct cells.

Specification

Product Description	Rabbit polyclonal antibody raised against recombinant SLC28A3.
Immunogen	Recombinant protein corresponding to amino acids of human SLC28A3.
Sequence	INCHHVLENAFNSTFPGNNTTKVIACCQSLLSSTVAKGPGEVIPGGNHSLSLKGCCDLLNPSTFNCNGISNT
Host	Rabbit
Reactivity	Human
Form	Liquid

Purification	Antigen affinity purification
Isotype	IgG
Recommend Usage	Immunohistochemistry (1:50-1:200) Western Blot (1:250-1:500) The optimal working dilution should be determined by the end user.
Storage Buffer	In PBS, pH 7.2 (40% glycerol, 0.02% sodium azide)
Storage Instruction	Store at 4°C. For long term storage store at -20°C. Aliquot to avoid repeated freezing and thawing.
Note	This product contains sodium azide: a POISONOUS AND HAZARDOUS SUBSTANCE which should be handled by trained staff only.

Applications

- Western Blot (Transfected lysate)

Western blot analysis of Lane 1: Negative control (vector only transfected HEK293T lysate), Lane 2: Over-expression Lysate (Co-expressed with a C-terminal myc-DDK tag (~3.1 kDa) in mammalian HEK293T cells) with SLC28A3 polyclonal antibody (Cat # PAB21742).

- Immunohistochemistry (Formalin/PFA-fixed paraffin-embedded sections)

Immunohistochemical staining of human pancreas with SLC28A3 polyclonal antibody (Cat # PAB21742) shows strong cytoplasmic positivity in intercalated duct cells.

Gene Info — SLC28A3

Entrez GeneID	64078
Protein Accession#	Q9HAS3
Gene Name	SLC28A3
Gene Alias	CNT3
Gene Description	solute carrier family 28 (sodium-coupled nucleoside transporter), member 3
Omim ID	608269
Gene Ontology	Hyperlink

Gene Summary

Nucleoside transporters, such as SLC28A3, regulate multiple cellular processes, including neurotransmission, vascular tone, adenosine concentration in the vicinity of cell surface receptors, and transport and metabolism of nucleoside drugs. SLC28A3 shows broad specificity for pyrimidine and purine nucleosides (Ritzel et al., 2001 [PubMed 11032837]).[supplied by OMIM]

Other Designations

OTTHUMP00000021567|concentrative Na⁺-nucleoside cotransporter

Disease

- [Adenocarcinoma](#)
- [Carcinoma](#)
- [Genetic Predisposition to Disease](#)
- [Kidney Failure](#)
- [Pancreatic Neoplasms](#)
- [Tobacco Use Disorder](#)