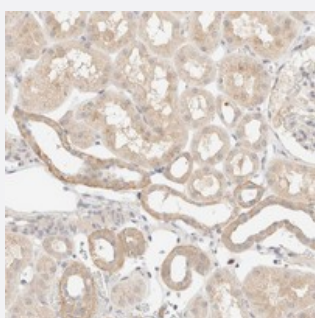


SNTB1 polyclonal antibody

Catalog # PAB21733 Size 100 uL

Applications



Immunohistochemistry (Formalin/PFA-fixed paraffin-embedded sections)

Immunohistochemical staining of human kidney with SNTB1 polyclonal antibody (Cat # PAB21733) shows weak cytoplasmic positivity in tubular cells at 1:10-1:20 dilution.

Specification

Product Description	Rabbit polyclonal antibody raised against recombinant SNTB1.
Immunogen	Recombinant protein corresponding to amino acids of human SNTB1.
Sequence	QGCHNSAELIAEISTACTYKNQECRLTIHYENGFSITTEPQEGAFPKTIQSPYEKLKMSSDDG
Host	Rabbit
Reactivity	Human
Form	Liquid
Purification	Antigen affinity purification
Isotype	IgG
Recommend Usage	Immunohistochemistry (1:10-1:20) The optimal working dilution should be determined by the end user.
Storage Buffer	In PBS, pH 7.2 (40% glycerol, 0.02% sodium azide)
Storage Instruction	Store at 4°C. For long term storage store at -20°C. Aliquot to avoid repeated freezing and thawing.

Note

This product contains sodium azide: a POISONOUS AND HAZARDOUS SUBSTANCE which should be handled by trained staff only.

Applications

- Immunohistochemistry (Formalin/PFA-fixed paraffin-embedded sections)

Immunohistochemical staining of human kidney with SNTB1 polyclonal antibody (Cat # PAB21733) shows weak cytoplasmic positivity in tubular cells at 1:10-1:20 dilution.

Gene Info — SNTB1

Entrez GeneID [6641](#)

Protein Accession# [Q13884](#)

Gene Name SNTB1

Gene Alias 59-DAP, A1B, BSYN2, DAPA1B, FLJ22442, MGC111389, SNT2, SNT2B1, TIP-43

Gene Description syntrophin, beta 1 (dystrophin-associated protein A1, 59kDa, basic component 1)

Omim ID [600026](#)

Gene Ontology [Hyperlink](#)

Gene Summary Dystrophin is a large, rod-like cytoskeletal protein found at the inner surface of muscle fibers. Dystrophin is missing in Duchenne Muscular Dystrophy patients and is present in reduced amounts in Becker Muscular Dystrophy patients. The protein encoded by this gene is a peripheral membrane protein found associated with dystrophin and dystrophin-related proteins. This gene is a member of the syntrophin gene family, which contains at least two other structurally-related genes. [provided by RefSeq]

Other Designations basic beta 1 syntrophin|dystrophin-associated protein A1, 59kD, basic component 1|syntrophin, beta 1 (dystrophin-associated protein A1, 59kD, basic component 1)|tax interaction protein 43