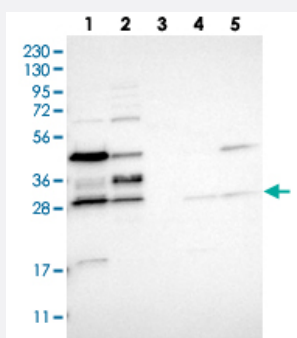


# RRP15 polyclonal antibody

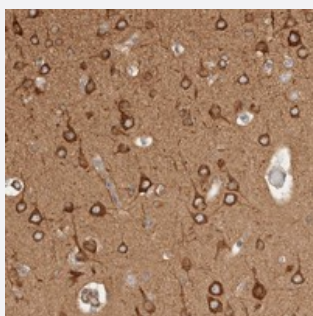
Catalog # PAB21727      Size 100 uL

## Applications



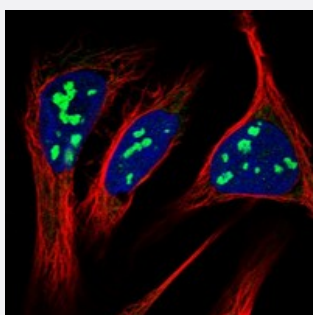
### Western Blot

Western blot analysis of Lane 1: RT-4, Lane 2: U-251 MG, Lane 3: Human Plasma, Lane 4: Liver, Lane 5: Tonsil with RRP15 polyclonal antibody (Cat # PAB21727) at 1:250-1:500 dilution.



### Immunohistochemistry (Formalin/PFA-fixed paraffin-embedded sections)

Immunohistochemical staining of human cerebral cortex with RRP15 polyclonal antibody (Cat # PAB21727) shows strong cytoplasmic positivity in neuronal cells at 1:200-1:500 dilution.



### Immunofluorescence

Immunofluorescent staining of human cell line U-2 OS with RRP15 polyclonal antibody (Cat # PAB21727) at 1-4 ug/mL dilution shows positivity in nucleoli and mitochondria.

## Specification

### Product Description

Rabbit polyclonal antibody raised against recombinant RRP15.

### Immunogen

Recombinant protein corresponding to amino acids of human RRP15.

<b>Sequence</b>	VSEEEENLKKTPKKKMKMVTGAVASVLEDEATDTSDSEGSCGSEKDHFYSDDDAIEADSEGDAE PCDKENENDGESSVGTN
<b>Host</b>	Rabbit
<b>Reactivity</b>	Human
<b>Form</b>	Liquid
<b>Purification</b>	Antigen affinity purification
<b>Isotype</b>	IgG
<b>Recommend Usage</b>	Immunohistochemistry (1:200-1:500) Western Blot (1:250-1:500) Immunofluorescence (1-4 ug/mL) The optimal working dilution should be determined by the end user.
<b>Storage Buffer</b>	In PBS, pH 7.2 (40% glycerol, 0.02% sodium azide)
<b>Storage Instruction</b>	Store at 4°C. For long term storage store at -20°C. Aliquot to avoid repeated freezing and thawing.
<b>Note</b>	This product contains sodium azide: a POISONOUS AND HAZARDOUS SUBSTANCE which should be handled by trained staff only.

## Applications

- Western Blot

Western blot analysis of Lane 1: RT-4, Lane 2: U-251 MG, Lane 3: Human Plasma, Lane 4: Liver, Lane 5: Tonsil with RRP15 polyclonal antibody (Cat # PAB21727) at 1:250-1:500 dilution.

- Immunohistochemistry (Formalin/PFA-fixed paraffin-embedded sections)

Immunohistochemical staining of human cerebral cortex with RRP15 polyclonal antibody (Cat # PAB21727) shows strong cytoplasmic positivity in neuronal cells at 1:200-1:500 dilution.

- Immunofluorescence

Immunofluorescent staining of human cell line U-2 OS with RRP15 polyclonal antibody (Cat # PAB21727) at 1-4 ug/mL dilution shows positivity in nucleoli and mitochondria.

## Gene Info — RRP15

**Entrez GeneID** [51018](#)

**Protein Accession#** [Q9Y3B9](#)

Gene Name	RRP15
Gene Alias	CGI-115, KIAA0507, MGC22291
Gene Description	ribosomal RNA processing 15 homolog (S. cerevisiae)
Omim ID	<a href="#">611193</a>
Gene Ontology	<a href="#">Hyperlink</a>
Gene Summary	This gene encodes a protein that co-purifies with human nucleoli. A similar protein in budding yeast is a component of pre-60S ribosomal particles, and is required for the early maturation steps of the 60S subunit. [provided by RefSeq]
Other Designations	OTTHUMP00000037485 ribosomal RNA processing 15 homolog