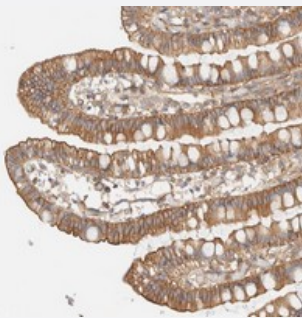


CEP112 polyclonal antibody

Catalog # PAB21702 Size 100 uL

Applications



Immunohistochemistry (Formalin/PFA-fixed paraffin-embedded sections)

Immunohistochemical staining of human small intestine with CEP112 polyclonal antibody (Cat # PAB21702) shows moderate cytoplasmic positivity in glandular cells.

Specification

Product Description	Rabbit polyclonal antibody raised against recombinant CEP112.
Immunogen	Recombinant protein corresponding to amino acids of human CEP112.
Sequence	RNTLHKEKDHLVNDYEQNMKLLQTKYDADINLLKQEHALSASKASSMIEELEQNVCQLKQQLQES ELQRKQQLRDQE
Host	Rabbit
Reactivity	Human
Form	Liquid
Purification	Antigen affinity purification
Isotype	IgG
Recommend Usage	Immunohistochemistry (1:1000-1:2500) The optimal working dilution should be determined by the end user.
Storage Buffer	In PBS, pH 7.2 (40% glycerol, 0.02% sodium azide)

Storage Instruction

Store at 4°C. For long term storage store at -20°C.
Aliquot to avoid repeated freezing and thawing.

Note

This product contains sodium azide: a POISONOUS AND HAZARDOUS SUBSTANCE which should be handled by trained staff only.

Applications

- Immunohistochemistry (Formalin/PFA-fixed paraffin-embedded sections)

Immunohistochemical staining of human small intestine with CEP112 polyclonal antibody (Cat # PAB21702) shows moderate cytoplasmic positivity in glandular cells.

Gene Info — CEP112

Entrez GeneID[201134](#)**Protein Accession#**[Q8N8E3](#)**Gene Name**

CEP112

Gene Alias

CCDC46, MACOCO

Gene Description

centrosomal protein 112kDa

Gene Ontology[Hyperlink](#)**Gene Summary**

This gene encodes a protein with filament, myosin tail and ATPase domains. Orthologs of this gene exist in mouse, rat and chimp. Alternate transcriptional splice variants, encoding different isoforms, have been characterized. [provided by RefSeq]

Other Designations

centrosomal protein of 112 kDa; coiled-coil domain containing 46; coiled-coil domain-containing protein 46

Disease

- [Tobacco Use Disorder](#)