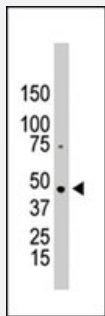


# PRMT2 polyclonal antibody

Catalog # PAB2169

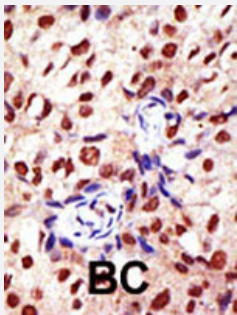
Size 400 uL

## Applications



### Western Blot (Cell lysate)

The PRMT2 polyclonal antibody (Cat # PAB2169) is used in Western blot to detect PRMT2 in HL-60 cell lysate.



### Immunohistochemistry (Formalin/PFA-fixed paraffin-embedded sections)

Formalin-fixed and paraffin-embedded human cancer tissue reacted with the primary antibody, which was peroxidase-conjugated to the secondary antibody, followed by DAB staining. This data demonstrates the use of this antibody for immunohistochemistry; clinical relevance has not been evaluated. BC = breast carcinoma.

## Specification

<b>Product Description</b>	Rabbit polyclonal antibody raised against synthetic peptide of PRMT2.
<b>Immunogen</b>	A synthetic peptide (conjugated with KLH) corresponding to N-terminus of human PRMT2.
<b>Host</b>	Rabbit
<b>Reactivity</b>	Human
<b>Form</b>	Liquid
<b>Purification</b>	Protein G purification

<b>Recommend Usage</b>	Western Blot (1:1000) Immunohistochemistry (1:50-100) The optimal working dilution should be determined by the end user.
<b>Storage Buffer</b>	In PBS (0.09% sodium azide)
<b>Storage Instruction</b>	Store at 4°C. For long term storage store at -20°C. Aliquot to avoid repeated freezing and thawing.
<b>Note</b>	This product contains sodium azide: a POISONOUS AND HAZARDOUS SUBSTANCE which should be handled by trained staff only.

## Applications

- Western Blot (Cell lysate)

The PRMT2 polyclonal antibody (Cat # PAB2169) is used in Western blot to detect PRMT2 in HL-60 cell lysate.

- Immunohistochemistry (Formalin/PFA-fixed paraffin-embedded sections)

Formalin-fixed and paraffin-embedded human cancer tissue reacted with the primary antibody, which was peroxidase-conjugated to the secondary antibody, followed by DAB staining. This data demonstrates the use of this antibody for immunohistochemistry; clinical relevance has not been evaluated. BC = breast carcinoma.

## Gene Info — PRMT2

<b>Entrez GeneID</b>	<a href="#">3275</a>
<b>Protein Accession#</b>	<a href="#">P55345</a>
<b>Gene Name</b>	PRMT2
<b>Gene Alias</b>	HRMT1L1, MGC111373
<b>Gene Description</b>	protein arginine methyltransferase 2
<b>Omim ID</b>	<a href="#">601961</a>
<b>Gene Ontology</b>	<a href="#">Hyperlink</a>
<b>Gene Summary</b>	S. cerevisiae)-like 1 HMT1 hnRNP methyltransferase-like 1 OTTHUMP00000115881 PRMT2 alpha PRMT2 beta PRMT2 gamma protein arginine N-methyltransferase 2
<b>Other Designations</b>	HMT1 (hnRNP methyltransferase, S. cerevisiae)-like 1 HMT1 hnRNP methyltransferase-like 1 OTTHUMP00000115881 PRMT2 alpha PRMT2 beta PRMT2 gamma protein arginine N-methyltransferase 2

## Publication Reference

- [Identification of protein arginine methyltransferase 2 as a coactivator for estrogen receptor alpha.](#)

Qi C, Chang J, Zhu Y, Yeldandi AV, Rao SM, Zhu YJ.

The Journal of Biological Chemistry 2002 Aug; 277(32):28624.

- [Identification and characterization of two putative human arginine methyltransferases \(HRMT1L1 and HRMT1L2\).](#)

Scott HS, Antonarakis SE, Lalioti MD, Rossier C, Silver PA, Henry MF.

Genomics 1998 Mar; 48(3):330.

- [Identification and mapping of a novel human gene, HRMT1L1, homologous to the rat protein arginine N-methyltransferase 1 \(PRMT1\) gene.](#)

Katsanis N, Yaspo ML, Fisher EM.

Mammalian Genome 1997 Jul; 8(7):526.

## Disease

- [Spinal Dysraphism](#)