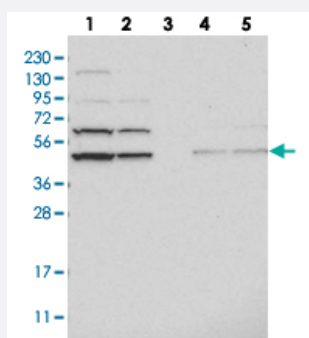


# ADSS polyclonal antibody

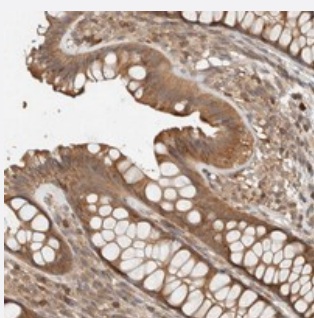
Catalog # PAB21689      Size 100 uL

## Applications



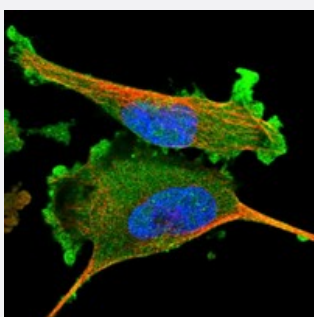
### Western Blot

Western blot analysis of Lane 1: RT-4, Lane 2: U-251 MG, Lane 3: Human Plasma, Lane 4: Liver, Lane 5: Tonsil with ADSS polyclonal antibody (Cat # PAB21689) at 1:250-1:500 dilution.



### Immunohistochemistry (Formalin/PFA-fixed paraffin-embedded sections)

Immunohistochemical staining of human colon with ADSS polyclonal antibody (Cat # PAB21689) shows moderate cytoplasmic positivity in glandular cells at 1:20-1:50 dilution.



### Immunofluorescence

Immunofluorescent staining of human cell line U-251MG with ADSS polyclonal antibody (Cat # PAB21689) at 1-4 ug/mL dilution shows positivity in plasma membrane and cytoplasm.

## Specification

### Product Description

Rabbit polyclonal antibody raised against recombinant ADSS.

### Immunogen

Recombinant protein corresponding to amino acids of human ADSS.

Sequence	KLDGEIIPHIPANQEV LNKVEVQYKTLPGWNTDISNARAFKELPVNAQNYVRFIEDELQIPVKWIGVG KSRESM
Host	Rabbit
Reactivity	Human
Form	Liquid
Purification	Antigen affinity purification
Isotype	IgG
Recommend Usage	Immunohistochemistry (1:20-1:50) Western Blot (1:250-1:500) Immunofluorescence (1-4 ug/mL) The optimal working dilution should be determined by the end user.
Storage Buffer	In PBS, pH 7.2 (40% glycerol, 0.02% sodium azide)
Storage Instruction	Store at 4°C. For long term storage store at -20°C. Aliquot to avoid repeated freezing and thawing.
Note	This product contains sodium azide: a POISONOUS AND HAZARDOUS SUBSTANCE which should be handled by trained staff only.

## Applications

- Western Blot

Western blot analysis of Lane 1: RT-4, Lane 2: U-251 MG, Lane 3: Human Plasma, Lane 4: Liver, Lane 5: Tonsil with ADSS polyclonal antibody (Cat # PAB21689) at 1:250-1:500 dilution.

- Immunohistochemistry (Formalin/PFA-fixed paraffin-embedded sections)

Immunohistochemical staining of human colon with ADSS polyclonal antibody (Cat # PAB21689) shows moderate cytoplasmic positivity in glandular cells at 1:20-1:50 dilution.

- Immunofluorescence

Immunofluorescent staining of human cell line U-251MG with ADSS polyclonal antibody (Cat # PAB21689) at 1-4 ug/mL dilution shows positivity in plasma membrane and cytoplasm.

## Gene Info — ADSS

Entrez GeneID [159](#)

Protein Accession# [P30520](#)

Gene Name	ADSS
Gene Alias	ADEH, MGC20404
Gene Description	adenylosuccinate synthase
Omim ID	<a href="#">103060</a>
Gene Ontology	<a href="#">Hyperlink</a>
Gene Summary	Adenylosuccinate synthetase catalyzes the first committed step in the conversion of IMP to AMP [ provided by RefSeq
Other Designations	Adenylosuccinate synthetase (Ade(-)H-complementing) OTTHUMP00000037982

## Pathway

- [Alanine](#)
- [Biosynthesis of alkaloids derived from histidine and purine](#)
- [Metabolic pathways](#)
- [Purine metabolism](#)

## Disease

- [Ataxia telangiectasia](#)
- [Genetic Predisposition to Disease](#)
- [Schizophrenia](#)