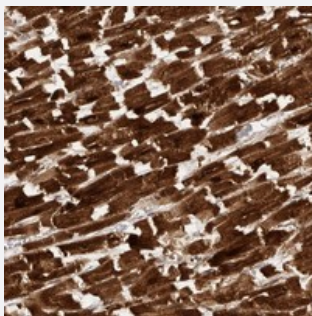


# C1orf26 polyclonal antibody

Catalog # PAB21663      Size 100 uL

## Applications



### Immunohistochemistry (Formalin/PFA-fixed paraffin-embedded sections)

Immunohistochemical staining of human heart muscle with C1orf26 polyclonal antibody (Cat # PAB21663) shows strong positivity in myocytes.

## Specification

Product Description	Rabbit polyclonal antibody raised against recombinant C1orf26.
Immunogen	Recombinant protein corresponding to amino acids of human C1orf26.
Sequence	VRILKTTEVPGFDKLVLIIPWVVMQELDRMKEGKLLKRAQHKAIPAVHFINDSLKNQDRKLWGQSIQ LASQKHVGLSDENNDDEVLCCLQHQE
Host	Rabbit
Reactivity	Human
Form	Liquid
Purification	Antigen affinity purification
Isotype	IgG
Recommend Usage	Immunohistochemistry (1:50-1:200) The optimal working dilution should be determined by the end user.
Storage Buffer	In PBS, pH 7.2 (40% glycerol, 0.02% sodium azide)

**Storage Instruction**

Store at 4°C. For long term storage store at -20°C.  
Aliquot to avoid repeated freezing and thawing.

**Note**

This product contains sodium azide: a POISONOUS AND HAZARDOUS SUBSTANCE which should be handled by trained staff only.

## Applications

- Immunohistochemistry (Formalin/PFA-fixed paraffin-embedded sections)

Immunohistochemical staining of human heart muscle with C1orf26 polyclonal antibody (Cat # PAB21663) shows strong positivity in myocytes.

## Gene Info — C1orf26

**Entrez GeneID**[54823](#)**Protein Accession#**[Q5T5J6](#)**Gene Name**

C1orf26

**Gene Alias**

FLJ20121, FLJ35944

**Gene Description**

chromosome 1 open reading frame 26

**Gene Ontology**[Hyperlink](#)**Other Designations**

OTTHUMP00000033402|OTTHUMP00000033403|hypothetical protein LOC54823

## Disease

- [Celiac Disease](#)
- [Genetic Predisposition to Disease](#)