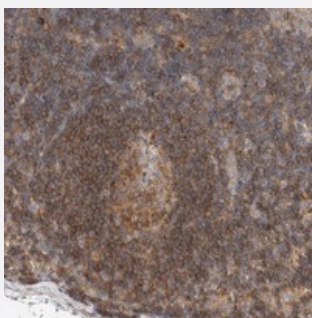


C8orf37 polyclonal antibody

Catalog # PAB21659 Size 100 uL

Applications



Immunohistochemistry (Formalin/PFA-fixed paraffin-embedded sections)

Immunohistochemical staining of human lymph node with C8orf37 polyclonal antibody (Cat # PAB21659) shows strong cytoplasmic positivity in lymphoid cells outside reaction centra at 1:500-1:1000 dilution.

Specification

Product Description	Rabbit polyclonal antibody raised against recombinant C8orf37.
Immunogen	Recombinant protein corresponding to amino acids of human C8orf37.
Sequence	MAEDLDELLDEVESKFCTPDLLRRGMVEQPKGCGGGTHSSDRNQAKAKETLRSTETFKKEDDL DSLNE
Host	Rabbit
Reactivity	Human
Form	Liquid
Purification	Antigen affinity purification
Isotype	IgG
Recommend Usage	Immunohistochemistry (1:500-1:1000) The optimal working dilution should be determined by the end user.
Storage Buffer	In PBS, pH 7.2 (40% glycerol, 0.02% sodium azide)

Storage Instruction

Store at 4°C. For long term storage store at -20°C.
Aliquot to avoid repeated freezing and thawing.

Note

This product contains sodium azide: a POISONOUS AND HAZARDOUS SUBSTANCE which should be handled by trained staff only.

Applications

- Immunohistochemistry (Formalin/PFA-fixed paraffin-embedded sections)

Immunohistochemical staining of human lymph node with C8orf37 polyclonal antibody (Cat # PAB21659) shows strong cytoplasmic positivity in lymphoid cells outside reaction centra at 1:500-1:1000 dilution.

Gene Info — C8orf37

Entrez GeneID[157657](#)**Protein Accession#**[Q96NL8](#)**Gene Name**

C8orf37

Gene Alias

FLJ30600

Gene Description

chromosome 8 open reading frame 37

Gene Ontology[Hyperlink](#)**Other Designations**

hypothetical protein LOC157657

Disease

- [Tobacco Use Disorder](#)