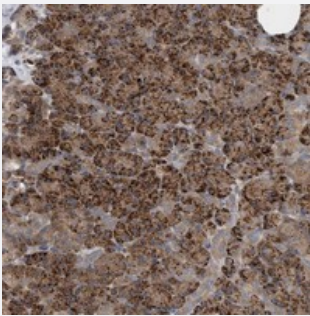


CAMSAP1 polyclonal antibody

Catalog # PAB21656 Size 100 uL

Applications



Immunohistochemistry (Formalin/PFA-fixed paraffin-embedded sections)

Immunohistochemical staining of human pancreas with CAMSAP1 polyclonal antibody (Cat # PAB21656) shows strong cytoplasmic positivity in exocrine glandular cells at 1:200-1:500 dilution.

Specification

Product Description	Rabbit polyclonal antibody raised against recombinant CAMSAP1.
Immunogen	Recombinant protein corresponding to amino acids of human CAMSAP1.
Sequence	TPTDPGLDSALEPSGDPHGKCLFDSYRLHDESNQRTLTLSSSKDANILSEQMSLKEVLDASVKE VGSSSDVSGKESVPVEEPLRSRASLIEVDLSDLK
Host	Rabbit
Reactivity	Human
Form	Liquid
Purification	Antigen affinity purification
Isotype	IgG
Recommend Usage	Immunohistochemistry (1:200-1:500) The optimal working dilution should be determined by the end user.
Storage Buffer	In PBS, pH 7.2 (40% glycerol, 0.02% sodium azide)

Storage Instruction

Store at 4°C. For long term storage store at -20°C.
Aliquot to avoid repeated freezing and thawing.

Note

This product contains sodium azide: a POISONOUS AND HAZARDOUS SUBSTANCE which should be handled by trained staff only.

Applications

- Immunohistochemistry (Formalin/PFA-fixed paraffin-embedded sections)

Immunohistochemical staining of human pancreas with CAMSAP1 polyclonal antibody (Cat # PAB21656) shows strong cytoplasmic positivity in exocrine glandular cells at 1:200-1:500 dilution.

Gene Info — CAMSAP1

Entrez GeneID[157922](#)**Protein Accession#**[Q5T5Y3](#)**Gene Name**

CAMSAP1

Gene Alias

DKFZp434F195, DKFZp434G2311, FLJ31228, MGC163452, PRO2405, bA100C15.1

Gene Description

calmodulin regulated spectrin-associated protein 1

Gene Ontology[Hyperlink](#)**Other Designations**

bA100C15.1 (novel protein)