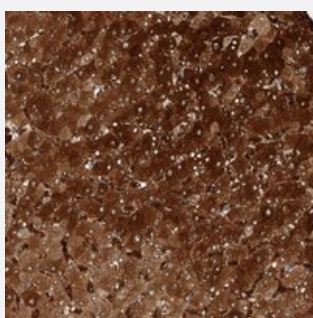


ZNF862 polyclonal antibody

Catalog # PAB21655 Size 100 uL

Applications



Immunohistochemistry (Formalin/PFA-fixed paraffin-embedded sections)

Immunohistochemical staining of human liver with ZNF862 polyclonal antibody (Cat # PAB21655) shows strong cytoplasmic positivity in hepatocytes.

Specification

Product Description	Rabbit polyclonal antibody raised against recombinant ZNF862.
Immunogen	Recombinant protein corresponding to amino acids of human ZNF862.
Sequence	GICLDKLEVAEQRFQADRERTVLTGIEYLQQRFDADRPPQLKNMEVFDTMAWPSGIELASFGNDD ILNLARYFECSLPTGYSEEALLEEWLGLKTIAQHLPFSMLCKNALAQHCRFPLLSKLMAVVVCVPIS T
Host	Rabbit
Reactivity	Human
Form	Liquid
Purification	Antigen affinity purification
Isotype	IgG
Recommend Usage	Immunohistochemistry (1:200-1:500) The optimal working dilution should be determined by the end user.
Storage Buffer	In PBS, pH 7.2 (40% glycerol, 0.02% sodium azide)

Storage Instruction

Store at 4°C. For long term storage store at -20°C.
Aliquot to avoid repeated freezing and thawing.

Note

This product contains sodium azide: a POISONOUS AND HAZARDOUS SUBSTANCE which should be handled by trained staff only.

Applications

- Immunohistochemistry (Formalin/PFA-fixed paraffin-embedded sections)

Immunohistochemical staining of human liver with ZNF862 polyclonal antibody (Cat # PAB21655) shows strong cytoplasmic positivity in hepatocytes.

Gene Info — ZNF862

Entrez GeneID[643641](#)**Protein Accession#**[O60290](#)**Gene Name**

ZNF862

Gene Alias

FLJ30362, KIAA0543

Gene Description

zinc finger protein 862

Gene Ontology[Hyperlink](#)**Other Designations**

-