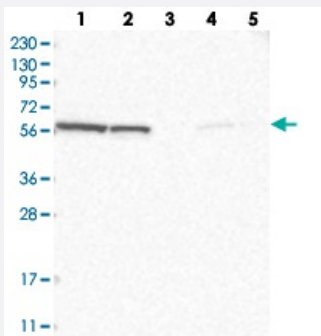


GOPC polyclonal antibody

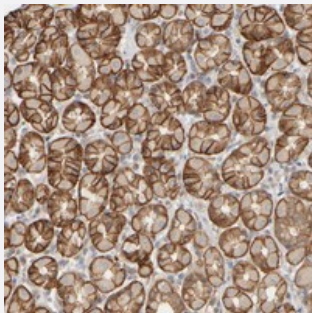
Catalog # PAB21636 Size 100 uL

Applications



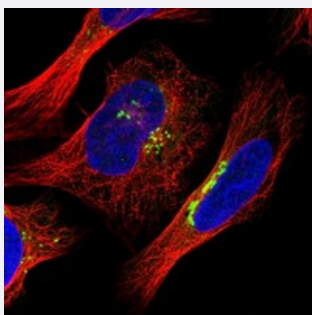
Western Blot

Western blot analysis of Lane 1: RT-4, Lane 2: U-251 MG, Lane 3: Human Plasma, Lane 4: Liver, Lane 5: Tonsil with GOPC polyclonal antibody (Cat # PAB21636) at 1:250-1:500 dilution.



Immunohistochemistry (Formalin/PFA-fixed paraffin-embedded sections)

Immunohistochemical staining of human stomach with GOPC polyclonal antibody (Cat # PAB21636) shows strong cytoplasmic and membrane positivity in glandular cells at 1:50-1:200 dilution.



Immunofluorescence

Immunofluorescent staining of human cell line U-2 OS with GOPC polyclonal antibody (Cat # PAB21636) at 1-4 ug/mL dilution shows positivity in golgi apparatus.

Specification

Product Description

Rabbit polyclonal antibody raised against recombinant GOPC.

Immunogen

Recombinant protein corresponding to amino acids of human GOPC.

Sequence	IEFEVVYVAPEVDSDDENVEYEDES GHRYRLYLDELEGGGNPGASCKDTSGEIKVLQGFNKKAVT DTHENGDLGTASETPLDDGASKLDDLHTLY
Host	Rabbit
Reactivity	Human
Form	Liquid
Purification	Antigen affinity purification
Isotype	IgG
Recommend Usage	Immunohistochemistry (1:50-1:200) Western Blot (1:250-1:500) Immunofluorescence (1-4 ug/mL) The optimal working dilution should be determined by the end user.
Storage Buffer	In PBS, pH 7.2 (40% glycerol, 0.02% sodium azide)
Storage Instruction	Store at 4°C. For long term storage store at -20°C. Aliquot to avoid repeated freezing and thawing.
Note	This product contains sodium azide: a POISONOUS AND HAZARDOUS SUBSTANCE which should be handled by trained staff only.

Applications

- Western Blot

Western blot analysis of Lane 1: RT-4, Lane 2: U-251 MG, Lane 3: Human Plasma, Lane 4: Liver, Lane 5: Tonsil with GOPC polyclonal antibody (Cat # PAB21636) at 1:250-1:500 dilution.

- Immunohistochemistry (Formalin/PFA-fixed paraffin-embedded sections)

Immunohistochemical staining of human stomach with GOPC polyclonal antibody (Cat # PAB21636) shows strong cytoplasmic and membrane positivity in glandular cells at 1:50-1:200 dilution.

- Immunofluorescence

Immunofluorescent staining of human cell line U-2 OS with GOPC polyclonal antibody (Cat # PAB21636) at 1-4 ug/mL dilution shows positivity in golgi apparatus.

Gene Info — GOPC

Entrez GeneID [57120](#)

Protein Accession# [Q9HD26](#)

Gene Name	GOPC
Gene Alias	CAL, FIG, GOPC1, PIST, dJ94G16.2
Gene Description	golgi associated PDZ and coiled-coil motif containing
Omim ID	606845
Gene Ontology	Hyperlink
Gene Summary	PIST is a PDZ domain-containing Golgi protein. PDZ domains contain approximately 90 amino acids and bind the extreme C terminus of proteins in a sequence-specific manner.[supplied by OMIM]
Other Designations	CFTR-associated ligand Golgi associated PDZ and coiled-coil motif containing protein OTTHUMP00000017088 OTTHUMP00000040403 PDZ/coiled-coil domain binding partner for the rho-family GTPase TC10 dJ94G16.2 PIST fused in glioblastoma