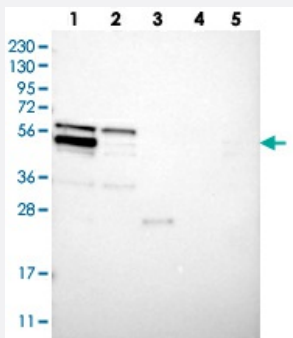


WIPF2 polyclonal antibody

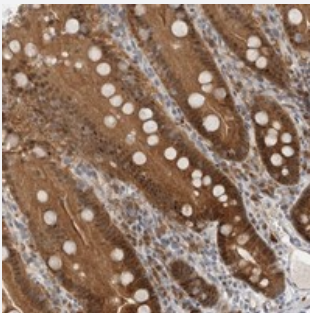
Catalog # PAB21633 Size 100 uL

Applications



Western Blot

Western blot analysis of Lane 1: RT-4, Lane 2: U-251 MG, Lane 3: Human Plasma, Lane 4: Liver, Lane 5: Tonsil with WIPF2 polyclonal antibody (Cat # PAB21633) at 1:250-1:500 dilution.



Immunohistochemistry (Formalin/PFA-fixed paraffin-embedded sections)

Immunohistochemical staining of human duodenum with WIPF2 polyclonal antibody (Cat # PAB21633) shows nuclear and cytoplasmic positivity in glandular cells at 1:50-1:200 dilution.

Specification

Product Description	Rabbit polyclonal antibody raised against recombinant WIPF2.
Immunogen	Recombinant protein corresponding to amino acids of human WIPF2.
Sequence	PVNIRTGPSGQSLAPPPPPYRQPPGVPNGPSSPTNESAPELPQRHNSLHRKTPGPVRLAPPPP TSASPSLLSNRPPP
Host	Rabbit
Reactivity	Human
Form	Liquid

Purification	Antigen affinity purification
Isotype	IgG
Recommend Usage	Immunohistochemistry (1:50-1:200) Western Blot (1:250-1:500) The optimal working dilution should be determined by the end user.
Storage Buffer	In PBS, pH 7.2 (40% glycerol, 0.02% sodium azide)
Storage Instruction	Store at 4°C. For long term storage store at -20°C. Aliquot to avoid repeated freezing and thawing.
Note	This product contains sodium azide: a POISONOUS AND HAZARDOUS SUBSTANCE which should be handled by trained staff only.

Applications

- Western Blot

Western blot analysis of Lane 1: RT-4, Lane 2: U-251 MG, Lane 3: Human Plasma, Lane 4: Liver, Lane 5: Tonsil with WIPF2 polyclonal antibody (Cat # PAB21633) at 1:250-1:500 dilution.

- Immunohistochemistry (Formalin/PFA-fixed paraffin-embedded sections)

Immunohistochemical staining of human duodenum with WIPF2 polyclonal antibody (Cat # PAB21633) shows nuclear and cytoplasmic positivity in glandular cells at 1:50-1:200 dilution.

Gene Info — WIPF2

Entrez GeneID	147179
Protein Accession#	Q8TF74
Gene Name	WIPF2
Gene Alias	WICH, WIRE
Gene Description	WAS/WASL interacting protein family, member 2
Omim ID	609692
Gene Ontology	Hyperlink
Gene Summary	This gene encodes a WASP interacting protein (WIP)-related protein. It has been shown that this protein has a role in the WASP-mediated organization of the actin cytoskeleton and that this protein is a potential link between the activated platelet-derived growth factor receptor and the actin polymerization machinery. [provided by RefSeq]

Other DesignationsWASP-binding protein|WIRE protein
