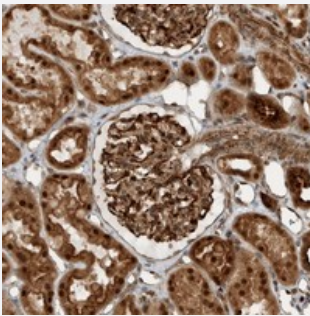


GIGYF1 polyclonal antibody

Catalog # PAB21632 Size 100 uL

Applications



Immunohistochemistry (Formalin/PFA-fixed paraffin-embedded sections)

Immunohistochemical staining of human kidney with GIGYF1 polyclonal antibody (Cat # PAB21632) shows strong nuclear and cytoplasmic positivity in tubular and glomeruli cells.

Specification

Product Description	Rabbit polyclonal antibody raised against recombinant GIGYF1.
Immunogen	Recombinant protein corresponding to amino acids of human GIGYF1.
Sequence	GIQLSPGVGSSAGPPGDLEDDEGLKHLQQEAEKLVASLQDSSLEEEQFTAAMQTQGLRHSAATALPLSHGAARKWFYKDPQGEIQGPFTTQEMAEWF
Host	Rabbit
Reactivity	Human
Form	Liquid
Purification	Antigen affinity purification
Isotype	IgG
Recommend Usage	Immunohistochemistry (1:50-1:200) The optimal working dilution should be determined by the end user.
Storage Buffer	In PBS, pH 7.2 (40% glycerol, 0.02% sodium azide)

Storage Instruction

Store at 4°C. For long term storage store at -20°C.
Aliquot to avoid repeated freezing and thawing.

Note

This product contains sodium azide: a POISONOUS AND HAZARDOUS SUBSTANCE which should be handled by trained staff only.

Applications

- Immunohistochemistry (Formalin/PFA-fixed paraffin-embedded sections)

Immunohistochemical staining of human kidney with GIGYF1 polyclonal antibody (Cat # PAB21632) shows strong nuclear and cytoplasmic positivity in tubular and glomeruli cells.

Gene Info — GIGYF1

Entrez GeneID[64599](#)**Protein Accession#**[O75420](#)**Gene Name**

GIGYF1

Gene Alias

GYF1, PERQ1

Gene Description

GRB10 interacting GYF protein 1

Gene Ontology[Hyperlink](#)**Gene Summary**

with GYF domain 1|postmeiotic segregation increased 2-like 12

Other Designations

GYF domain containing 1|PERQ amino acid rich, with GYF domain 1|postmeiotic segregation increased 2-like 12