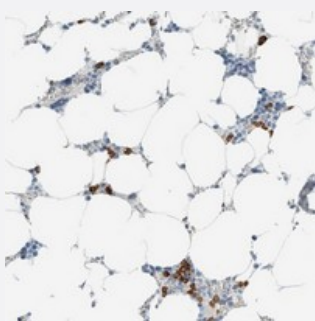


ARHGAP27 polyclonal antibody

Catalog # PAB21625 Size 100 uL

Applications



Immunohistochemistry (Formalin/PFA-fixed paraffin-embedded sections)

Immunohistochemical staining of human bone marrow with ARHGAP27 polyclonal antibody (Cat # PAB21625) shows strong cytoplasmic positivity in a subset of bone marrow poietic cells.

Specification

Product Description	Rabbit polyclonal antibody raised against recombinant ARHGAP27.
Immunogen	Recombinant protein corresponding to amino acids of human ARHGAP27.
Sequence	WTVLEGGVLTFFKDSKTSAAAGGLRQPSKFSTPEYTVELRGATLSWAPKDKSSRKNVLELRSDG SEYLIQHDSEAIISTWHKAI AQGIQE
Host	Rabbit
Reactivity	Human
Form	Liquid
Purification	Antigen affinity purification
Isotype	IgG
Recommend Usage	Immunohistochemistry (1:200-1:500) The optimal working dilution should be determined by the end user.
Storage Buffer	In PBS, pH 7.2 (40% glycerol, 0.02% sodium azide)

Storage Instruction

Store at 4°C. For long term storage store at -20°C.
Aliquot to avoid repeated freezing and thawing.

Note

This product contains sodium azide: a POISONOUS AND HAZARDOUS SUBSTANCE which should be handled by trained staff only.

Applications

- Immunohistochemistry (Formalin/PFA-fixed paraffin-embedded sections)

Immunohistochemical staining of human bone marrow with ARHGAP27 polyclonal antibody (Cat # PAB21625) shows strong cytoplasmic positivity in a subset of bone marrow poietic cells.

Gene Info — ARHGAP27

Entrez GeneID[201176](#)**Protein Accession#**[Q6ZUM4](#)**Gene Name**

ARHGAP27

Gene Alias

CAMGAP1, FLJ43547, MGC120624

Gene Description

Rho GTPase activating protein 27

Omim ID[610591](#)**Gene Ontology**[Hyperlink](#)**Gene Summary**

Rho (see ARHA; MIM 165390)-like small GTPases are involved in many cellular processes, and they are inactive in the GDP-bound state and active in the GTP-bound state. GTPase-activating proteins, such as ARHGAP27, inhibit Rho-like proteins by stimulating their intrinsic GTPase activity (Katoh and Katoh, 2004 [PubMed 15492870]).[supplied by OMIM]

Other Designations

-