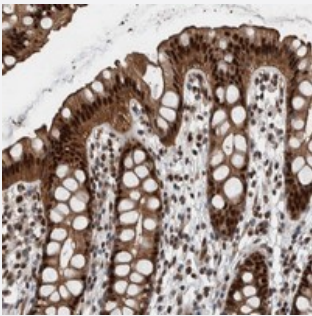


FAM135B polyclonal antibody

Catalog # PAB21622 Size 100 uL

Applications



Immunohistochemistry (Formalin/PFA-fixed paraffin-embedded sections)

Immunohistochemical staining of human rectum with FAM135B polyclonal antibody (Cat # PAB21622) shows strong nuclear and cytoplasmic positivity in glandular cells.

Specification

Product Description	Rabbit polyclonal antibody raised against recombinant FAM135B.
Immunogen	Recombinant protein corresponding to amino acids of human FAM135B.
Sequence	MPKDLNVGQQALSNSGISEVEGLSQHQVPELSCTSAADAINRNSTGQQSQSGSPCIMDDTAFNR GVNAFPEAKHKAGTVCTVTHSVHSQV
Host	Rabbit
Reactivity	Human
Form	Liquid
Purification	Antigen affinity purification
Isotype	IgG
Recommend Usage	Immunohistochemistry (1:50-1:200) The optimal working dilution should be determined by the end user.
Storage Buffer	In PBS, pH 7.2 (40% glycerol, 0.02% sodium azide)

Storage Instruction

Store at 4°C. For long term storage store at -20°C.
Aliquot to avoid repeated freezing and thawing.

Note

This product contains sodium azide: a POISONOUS AND HAZARDOUS SUBSTANCE which should be handled by trained staff only.

Applications

- Immunohistochemistry (Formalin/PFA-fixed paraffin-embedded sections)

Immunohistochemical staining of human rectum with FAM135B polyclonal antibody (Cat # PAB21622) shows strong nuclear and cytoplasmic positivity in glandular cells.

Gene Info — FAM135B

Entrez GeneID[51059](#)**Protein Accession#**[Q49AJ0](#)**Gene Name**

FAM135B

Gene Alias

C8ORFK32, MGC126009, MGC126010, MGC33221

Gene Description

family with sequence similarity 135, member B

Gene Ontology[Hyperlink](#)**Gene Summary**

O

Other Designations

OTTHUMP00000194813|OTTHUMP00000194814|hypothetical protein LOC51059