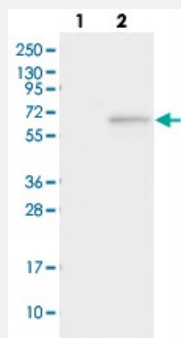


# FAM154A polyclonal antibody

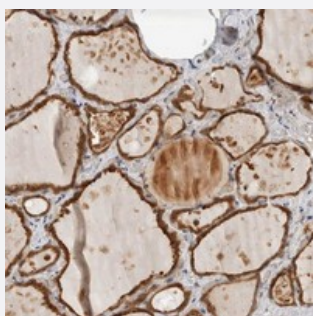
Catalog # PAB21620      Size 100 uL

## Applications



### Western Blot (Transfected lysate)

Western blot analysis of Lane 1: Negative control (vector only transfected HEK293T lysate), Lane 2: Over-expression Lysate (Co-expressed with a C-terminal myc-DDK tag (~3.1 kDa) in mammalian HEK293T cells) with FAM154A polyclonal antibody (Cat # PAB21620).



### Immunohistochemistry (Formalin/PFA-fixed paraffin-embedded sections)

Immunohistochemical staining of human thyroid gland with FAM154A polyclonal antibody (Cat # PAB21620) strong cytoplasmic positivity in glandular cells.

## Specification

Product Description	Rabbit polyclonal antibody raised against recombinant FAM154A.
Immunogen	Recombinant protein corresponding to amino acids of human FAM154A.
Sequence	PHLPINTKSCCKPHWSGPRGNVPVESQTTYTISFTPKEMGRCLASYPEPPGYTFEEVDALGHRIYKPVSQAGSQSSHLSDVDDSENPNQRELEVLA
Host	Rabbit
Reactivity	Human
Form	Liquid

Purification	Antigen affinity purification
Isotype	IgG
Recommend Usage	Immunohistochemistry (1:10-1:20) Western Blot (1:250-1:500) The optimal working dilution should be determined by the end user.
Storage Buffer	In PBS, pH 7.2 (40% glycerol, 0.02% sodium azide)
Storage Instruction	Store at 4°C. For long term storage store at -20°C. Aliquot to avoid repeated freezing and thawing.
Note	This product contains sodium azide: a POISONOUS AND HAZARDOUS SUBSTANCE which should be handled by trained staff only.

## Applications

- Western Blot (Transfected lysate)

Western blot analysis of Lane 1: Negative control (vector only transfected HEK293T lysate), Lane 2: Over-expression Lysate (Co-expressed with a C-terminal myc-DDK tag (~3.1 kDa) in mammalian HEK293T cells) with FAM154A polyclonal antibody (Cat # PAB21620).

- Immunohistochemistry (Formalin/PFA-fixed paraffin-embedded sections)

Immunohistochemical staining of human thyroid gland with FAM154A polyclonal antibody (Cat # PAB21620) strong cytoplasmic positivity in glandular cells.

## Gene Info — FAM154A

Entrez GeneID	<a href="#">158297</a>
Protein Accession#	<a href="#">Q8IYX7</a>
Gene Name	FAM154A
Gene Alias	C9orf138, FLJ35283, MGC35182
Gene Description	family with sequence similarity 154, member A
Gene Ontology	<a href="#">Hyperlink</a>
Gene Summary	O
Other Designations	4930500O09Rik OTTHUMP00000021090 OTTHUMP00000021091 hypothetical protein LOC158297

## Disease

- [Tobacco Use Disorder](#)