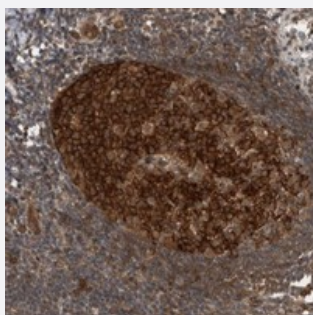


MYO1E polyclonal antibody

Catalog # PAB21617 Size 100 uL

Applications



Immunohistochemistry (Formalin/PFA-fixed paraffin-embedded sections)

Immunohistochemical staining of human appendix with MYO1E polyclonal antibody (Cat # PAB21617) shows strong cytoplasmic positivity in germinal center cells.

Specification

| | |
|----------------------------|--|
| Product Description | Rabbit polyclonal antibody raised against recombinant MYO1E. |
| Immunogen | Recombinant protein corresponding to amino acids of human MYO1E. |
| Sequence | VIRNQYVPYPHAPGSQRSNQKSLYTSMARPPPLPRQQSTSSDRVSQTPESLDFLKVPDQGAAGVR RQTTSRPPPAGGRPKPQPKPKPQVPQCKALYAYDAQDTDELSFNANDIIDIIKEDPSGWWTGRLR GKQG |
| Host | Rabbit |
| Reactivity | Human |
| Form | Liquid |
| Purification | Antigen affinity purification |
| Isotype | IgG |
| Recommend Usage | Immunohistochemistry (1:200-1:500) The optimal working dilution should be determined by the end user. |
| Storage Buffer | In PBS, pH 7.2 (40% glycerol, 0.02% sodium azide) |

Storage Instruction

Store at 4°C. For long term storage store at -20°C.
Aliquot to avoid repeated freezing and thawing.

Note

This product contains sodium azide: a POISONOUS AND HAZARDOUS SUBSTANCE which should be handled by trained staff only.

Applications

- Immunohistochemistry (Formalin/PFA-fixed paraffin-embedded sections)

Immunohistochemical staining of human appendix with MYO1E polyclonal antibody (Cat # PAB21617) shows strong cytoplasmic positivity in germinal center cells.

Gene Info — MYO1E

| | |
|--------------------|---------------------------------|
| Entrez GeneID | 4643 |
| Protein Accession# | Q12965 |
| Gene Name | MYO1E |
| Gene Alias | HuncM-IC, MGC104638, MYO1C |
| Gene Description | myosin IE |
| Omim ID | 601479 |
| Gene Ontology | Hyperlink |
| Other Designations | MYO1E variant protein myosin-IC |

Disease

- [Tobacco Use Disorder](#)