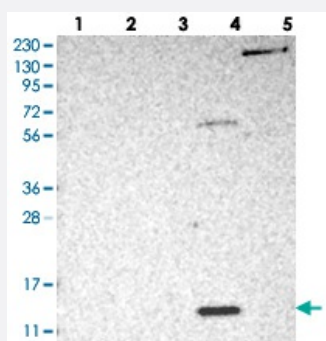


PSMG3 polyclonal antibody

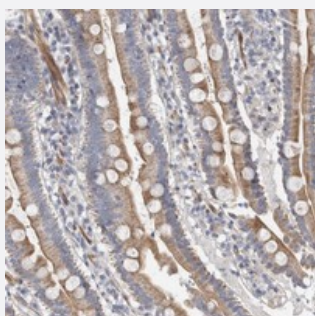
Catalog # PAB21614 Size 100 uL

Applications



Western Blot

Western blot analysis of Lane 1: RT-4, Lane 2: U-251 MG, Lane 3: Human Plasma, Lane 4: Liver, Lane 5: Tonsil with PSMG3 polyclonal antibody (Cat # PAB21614).



Immunohistochemistry (Formalin/PFA-fixed paraffin-embedded sections)

Immunohistochemical staining of human duodenum with PSMG3 polyclonal antibody (Cat # PAB21614) shows cytoplasmic positivity in glandular cells.

Specification

Product Description	Rabbit polyclonal antibody raised against recombinant PSMG3.
Immunogen	Recombinant protein corresponding to amino acids of human PSMG3.
Sequence	VVVTQFGKMGTLVSLEPSSVASDVSKPVLTTKVLLGQDEPLIHVFAKNLVAFVSQEAGNRAVLLA VAVKDKSMEGLKALREVIRVCQ
Host	Rabbit
Reactivity	Human
Form	Liquid

Purification	Antigen affinity purification
Isotype	IgG
Recommend Usage	Immunohistochemistry (1:50-1:200) Western Blot (1:250-1:500) The optimal working dilution should be determined by the end user.
Storage Buffer	In PBS, pH 7.2 (40% glycerol, 0.02% sodium azide)
Storage Instruction	Store at 4°C. For long term storage store at -20°C. Aliquot to avoid repeated freezing and thawing.
Note	This product contains sodium azide: a POISONOUS AND HAZARDOUS SUBSTANCE which should be handled by trained staff only.

Applications

- Western Blot

Western blot analysis of Lane 1: RT-4, Lane 2: U-251 MG, Lane 3: Human Plasma, Lane 4: Liver, Lane 5: Tonsil with PSMG3 polyclonal antibody (Cat # PAB21614).

- Immunohistochemistry (Formalin/PFA-fixed paraffin-embedded sections)

Immunohistochemical staining of human duodenum with PSMG3 polyclonal antibody (Cat # PAB21614) shows cytoplasmic positivity in glandular cells.

Gene Info — PSMG3

Entrez GeneID	84262
Protein Accession#	Q9BT73
Gene Name	PSMG3
Gene Alias	C7orf48, MGC10911, PAC3
Gene Description	proteasome (prosome, macropain) assembly chaperone 3
Gene Ontology	Hyperlink
Gene Summary	O
Other Designations	proteasome assembling chaperone 3