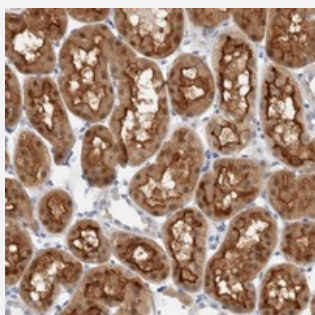


# METRNL polyclonal antibody

Catalog # PAB21608      Size 100 uL

## Applications



### Immunohistochemistry (Formalin/PFA-fixed paraffin-embedded sections)

Immunohistochemical staining of human kidney with METRNL polyclonal antibody (Cat # PAB21608) shows distinct cytoplasmic and membranous positivity in proximal tubular cells at 1:50-1:200 dilution.

## Specification

Product Description	Rabbit polyclonal antibody raised against recombinant METRNL.
Immunogen	Recombinant protein corresponding to amino acids of human METRNL.
Sequence	QYSSDRCSWKGSGLTHEHRKEVEQVYLRCAGAVEWMYPTGALMVNLRPNTFSPARHLTV CIR SFTDSS
Host	Rabbit
Reactivity	Human
Form	Liquid
Purification	Antigen affinity purification
Isotype	IgG
Recommend Usage	Immunohistochemistry (1:50-1:200) The optimal working dilution should be determined by the end user.
Storage Buffer	In PBS, pH 7.2 (40% glycerol, 0.02% sodium azide)

**Storage Instruction**

Store at 4°C. For long term storage store at -20°C.  
Aliquot to avoid repeated freezing and thawing.

**Note**

This product contains sodium azide: a POISONOUS AND HAZARDOUS SUBSTANCE which should be handled by trained staff only.

## Applications

- Immunohistochemistry (Formalin/PFA-fixed paraffin-embedded sections)

Immunohistochemical staining of human kidney with METRNL polyclonal antibody (Cat # PAB21608) shows distinct cytoplasmic and membranous positivity in proximal tubular cells at 1:50-1:200 dilution.

## Gene Info — METRNL

**Entrez GeneID** [284207](#)

**Protein Accession#** [Q641Q3](#)

**Gene Name** METRNL

**Gene Alias** MGC99788

**Gene Description** meteorin, glial cell differentiation regulator-like

**Gene Ontology** [Hyperlink](#)

**Gene Summary** O

**Other Designations** -