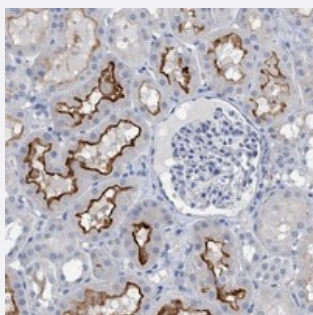


SLC34A3 polyclonal antibody

Catalog # PAB21605 Size 100 uL

Applications



Immunohistochemistry (Formalin/PFA-fixed paraffin-embedded sections)

Immunohistochemical staining of human kidney with SLC34A3 polyclonal antibody (Cat # PAB21605) shows distinct membranous positivity in cells in tubules at 1:20-1:50 dilution.

Specification

Product Description	Rabbit polyclonal antibody raised against recombinant SLC34A3.
Immunogen	Recombinant protein corresponding to amino acids of human SLC34A3.
Sequence	MPSSLPGSQVPHPTLDAVDLVEKTLRNEGTSSSAPVLEEGDTPWTLPQLKDTSQPWKELRVA GRLRRVAGSVLKACG
Host	Rabbit
Reactivity	Human
Form	Liquid
Purification	Antigen affinity purification
Isotype	IgG
Recommend Usage	Immunohistochemistry (1:20-1:50) The optimal working dilution should be determined by the end user.
Storage Buffer	In PBS, pH 7.2 (40% glycerol, 0.02% sodium azide)

Storage Instruction

Store at 4°C. For long term storage store at -20°C.
Aliquot to avoid repeated freezing and thawing.

Note

This product contains sodium azide: a POISONOUS AND HAZARDOUS SUBSTANCE which should be handled by trained staff only.

Applications

- Immunohistochemistry (Formalin/PFA-fixed paraffin-embedded sections)

Immunohistochemical staining of human kidney with SLC34A3 polyclonal antibody (Cat # PAB21605) shows distinct membranous positivity in cells in tubules at 1:20-1:50 dilution.

Gene Info — SLC34A3

Entrez GeneID[142680](#)**Protein Accession#**[Q8N130](#)**Gene Name**

SLC34A3

Gene Alias

FLJ38680, HHRH, NPT1lc

Gene Description

solute carrier family 34 (sodium phosphate), member 3

Omim ID[241530 609826](#)**Gene Ontology**[Hyperlink](#)**Gene Summary**

SLC34A3 contributes to the maintenance of inorganic phosphate (Pi) concentration at the kidney (Segawa et al., 2002 [PubMed 11880379]).[supplied by OMIM]

Other DesignationsOTTHUMP00000162587|type IIc Na⁺/Pi cotransporter