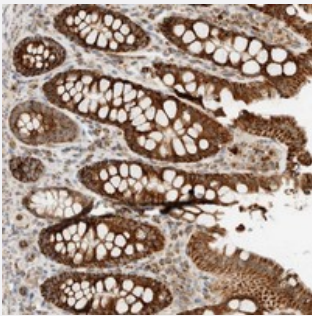


KIFAP3 polyclonal antibody

Catalog # PAB21604 Size 100 uL

Applications



Immunohistochemistry (Formalin/PFA-fixed paraffin-embedded sections)

Immunohistochemical staining of human colon with KIFAP3 polyclonal antibody (Cat # PAB21604) strong cytoplasmic positivity in glandular cells at 1:50-1:200 dilution.

Specification

Product Description	Rabbit polyclonal antibody raised against recombinant KIFAP3.
Immunogen	Recombinant protein corresponding to amino acids of human KIFAP3.
Sequence	ELLNAQQEDDEFVCQIIYVFYQMVFHQATRDVLIKETQAPAYLIDLMHDKNNEIRKVCNTLDIAEYD EEWAKK
Host	Rabbit
Reactivity	Human
Form	Liquid
Purification	Antigen affinity purification
Isotype	IgG
Recommend Usage	Immunohistochemistry (1:50-1:200) The optimal working dilution should be determined by the end user.
Storage Buffer	In PBS, pH 7.2 (40% glycerol, 0.02% sodium azide)

Storage Instruction

Store at 4°C. For long term storage store at -20°C.
Aliquot to avoid repeated freezing and thawing.

Note

This product contains sodium azide: a POISONOUS AND HAZARDOUS SUBSTANCE which should be handled by trained staff only.

Applications

- Immunohistochemistry (Formalin/PFA-fixed paraffin-embedded sections)

Immunohistochemical staining of human colon with KIFAP3 polyclonal antibody (Cat # PAB21604) strong cytoplasmic positivity in glandular cells at 1:50-1:200 dilution.

Gene Info — KIFAP3

Entrez GeneID[22920](#)**Protein Accession#**[Q92845](#)**Gene Name**

KIFAP3

Gene Alias

FLJ22818, KAP3, SMAP, Smg-GDS, dJ190116.1

Gene Description

kinesin-associated protein 3

Omim ID[601836](#)**Gene Ontology**[Hyperlink](#)**Gene Summary**

The small G protein GDP dissociation stimulator (smg GDS) is a regulator protein having two activities on a group of small G proteins including the Rho and Rap1 family members and Ki-Ras; one is to stimulate their GDP/GTP exchange reactions, and the other is to inhibit their interactions with membranes. The protein encoded by this gene contains 9 'Armadillo' repeats and interacts with the smg GDS protein through these repeats. This protein, which is highly concentrated around the endoplasmic reticulum, is phosphorylated by v-src, and this phosphorylation reduces the affinity of the protein for smg GDS. It is thought that this protein serves as a linker between human chromosome-associated polypeptide (HCAP) and KIF3A/B, a kinesin superfamily protein in the nucleus, and that it plays a role in the interaction of chromosomes with an ATPase motor protein. [provided by RefSeq]

Other Designations

OTTHUMP00000034158|small G protein GDP dissociation stimulator|smg GDS-associated protein

Disease

- [Amyotrophic Lateral Sclerosis](#)
- [Genetic Predisposition to Disease](#)
- [Neoplasm Invasiveness](#)
- [Osteoporosis](#)
- [Prostatic Neoplasms](#)