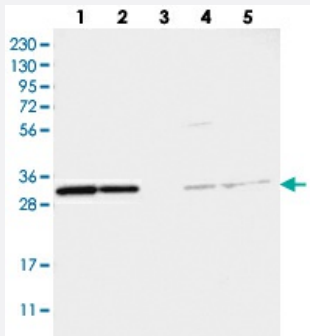


# TATDN1 polyclonal antibody

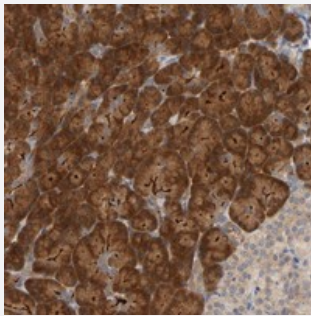
Catalog # PAB21595      Size 100 uL

## Applications



### Western Blot

Western blot analysis of Lane 1: RT-4, Lane 2: U-251 MG, Lane 3: Human Plasma, Lane 4: Liver, Lane 5: Tonsil with TATDN1 polyclonal antibody (Cat # PAB21595).



### Immunohistochemistry (Formalin/PFA-fixed paraffin-embedded sections)

Immunohistochemical staining of human pancreas with TATDN1 polyclonal antibody (Cat # PAB21595) shows strong cytoplasmic positivity in exocrine glandular cells.

## Specification

<b>Product Description</b>	Rabbit polyclonal antibody raised against recombinant TATDN1.
<b>Immunogen</b>	Recombinant protein corresponding to amino acids of human TATDN1.
<b>Sequence</b>	CGEFEKNNPDLYLKELLNLAENNKGVVAIGECGLDFDRLQFCPKDTQLKYFEKQFELSEQTKLP
<b>Host</b>	Rabbit
<b>Reactivity</b>	Human
<b>Form</b>	Liquid
<b>Purification</b>	Antigen affinity purification

Isotype	IgG
Recommend Usage	Immunohistochemistry (1:20-1:50) Western Blot (1:250-1:500) The optimal working dilution should be determined by the end user.
Storage Buffer	In PBS, pH 7.2 (40% glycerol, 0.02% sodium azide)
Storage Instruction	Store at 4°C. For long term storage store at -20°C. Aliquot to avoid repeated freezing and thawing.
Note	This product contains sodium azide: a POISONOUS AND HAZARDOUS SUBSTANCE which should be handled by trained staff only.

## Applications

- Western Blot

Western blot analysis of Lane 1: RT-4, Lane 2: U-251 MG, Lane 3: Human Plasma, Lane 4: Liver, Lane 5: Tonsil with TATDN1 polyclonal antibody (Cat # PAB21595).

- Immunohistochemistry (Formalin/PFA-fixed paraffin-embedded sections)

Immunohistochemical staining of human pancreas with TATDN1 polyclonal antibody (Cat # PAB21595) shows strong cytoplasmic positivity in exocrine glandular cells.

## Gene Info — TATDN1

Entrez GeneID	<a href="#">83940</a>
Protein Accession#	<a href="#">Q6P1N9</a>
Gene Name	TATDN1
Gene Alias	CDA11
Gene Description	TatD DNase domain containing 1
Gene Ontology	<a href="#">Hyperlink</a>
Other Designations	CDA11-like protein 2 hepatocarcinoma high expression protein