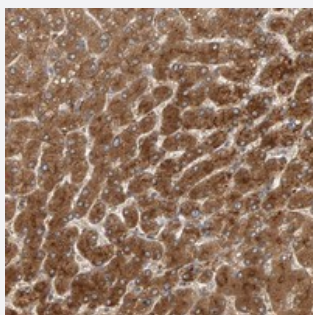


ZNF160 polyclonal antibody

Catalog # PAB21594 Size 100 uL

Applications



Immunohistochemistry (Formalin/PFA-fixed paraffin-embedded sections)

Immunohistochemical staining of human liver with ZNF160 polyclonal antibody (Cat # PAB21594) shows strong cytoplasmic positivity in hepatocytes.

Specification

Product Description	Rabbit polyclonal antibody raised against recombinant ZNF160.
Immunogen	Recombinant protein corresponding to amino acids of human ZNF160.
Sequence	LVSLGLCHFDMNIISMLEEGKEPWTVKSCVKIARKPRTRECVKGVVTDIPPKCTIKDLLPKEKSSTE AVFHTVVLERHESPDIEDFSFKEPQKNVHDFECQWRDDTGNYKGVLMQAQKEGKRDQRDRRDIE NKLMNNQLGVSFHSHP
Host	Rabbit
Reactivity	Human
Form	Liquid
Purification	Antigen affinity purification
Isotype	IgG
Recommend Usage	Immunohistochemistry (1:1000-1:2500) The optimal working dilution should be determined by the end user.
Storage Buffer	In PBS, pH 7.2 (40% glycerol, 0.02% sodium azide)

Storage Instruction

Store at 4°C. For long term storage store at -20°C.
Aliquot to avoid repeated freezing and thawing.

Note

This product contains sodium azide: a POISONOUS AND HAZARDOUS SUBSTANCE which should be handled by trained staff only.

Applications

- Immunohistochemistry (Formalin/PFA-fixed paraffin-embedded sections)

Immunohistochemical staining of human liver with ZNF160 polyclonal antibody (Cat # PAB21594) shows strong cytoplasmic positivity in hepatocytes.

Gene Info — ZNF160

Entrez GeneID[90338](#)**Protein Accession#**[Q9HCG1](#)**Gene Name**

ZNF160

Gene Alias

DKFZp686B16128, F11, FLJ00032, HKr18, HZF5, KIAA1611, KR18

Gene Description

zinc finger protein 160

Omim ID[600398](#)**Gene Ontology**[Hyperlink](#)**Gene Summary**

The protein encoded by this gene is a Kruppel-related zinc finger protein which is characterized by the presence of an N-terminal repressor domain, the Kruppel-associated box (KRAB). The KRAB domain is a potent repressor of transcription; thus this protein may function in transcription regulation. Three alternative transcripts encoding the same protein have been described. [provided by RefSeq]

Other Designations

KRAB zinc finger protein KR18