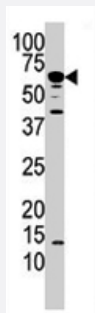


PPP3CA polyclonal antibody

Catalog # PAB2159

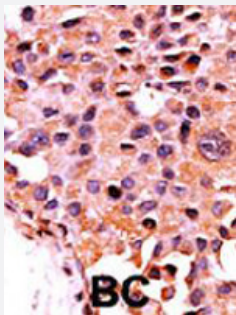
Size 400 uL

Applications



Western Blot (Tissue lysate)

Western blot analysis of PPP3CA polyclonal antibody (Cat # PAB2159) in mouse kidney tissue lysate. PPP3CA (arrow) was detected using the purified Polyclonal antibody.



Immunohistochemistry (Formalin/PFA-fixed paraffin-embedded sections)

Formalin-fixed and paraffin-embedded human cancer tissue reacted with PPP3CA polyclonal antibody (Cat # PAB2159), which was peroxidase-conjugated to the secondary antibody, followed by AEC staining. This data demonstrates the use of this antibody for immunohistochemistry; clinical relevance has not been evaluated. BC = breast carcinoma.

Specification

Product Description	Rabbit polyclonal antibody raised against synthetic peptide of PPP3CA.
Immunogen	A synthetic peptide (conjugated with KLH) corresponding to N-terminus of human PPP3CA.
Host	Rabbit
Reactivity	Human
Form	Liquid
Purification	Ammonium sulfate precipitation

Recommend Usage	Western Blot (1:1000) Immunohistochemistry (1:50-100) The optimal working dilution should be determined by the end user.
Storage Buffer	In PBS (0.09% sodium azide)
Storage Instruction	Store at 4°C. For long term storage store at -20°C. Aliquot to avoid repeated freezing and thawing.
Note	This product contains sodium azide: a POISONOUS AND HAZARDOUS SUBSTANCE which should be handled by trained staff only.

Applications

- Western Blot (Tissue lysate)

Western blot analysis of PPP3CA polyclonal antibody (Cat # PAB2159) in mouse kidney tissue lysate. PPP3CA (arrow) was detected using the purified Polyclonal antibody.

- Immunohistochemistry (Formalin/PFA-fixed paraffin-embedded sections)

Formalin-fixed and paraffin-embedded human cancer tissue reacted with PPP3CA polyclonal antibody (Cat # PAB2159), which was peroxidase-conjugated to the secondary antibody, followed by AEC staining.

This data demonstrates the use of this antibody for immunohistochemistry; clinical relevance has not been evaluated. BC = breast carcinoma.

Gene Info — PPP3CA

Entrez GeneID	5530
Protein Accession#	NP_000935:Q08209
Gene Name	PPP3CA
Gene Alias	CALN, CALNA, CALNA1, CCN1, CNA1, PPP2B
Gene Description	protein phosphatase 3 (formerly 2B), catalytic subunit, alpha isoform
Omim ID	114105
Gene Ontology	Hyperlink
Gene Summary	catalytic subunit
Other Designations	calcineurin A alpha protein phosphatase 3, catalytic subunit, alpha isoform serine/threonine-protein phosphatase 2B catalytic subunit alpha isoform

Publication Reference

- [The linker region joining the catalytic and the regulatory domains of CnA is essential for binding to NFAT.](#)

Rodriguez A, Martinez-Martinez S, Lopez-Maderuelo MD, Ortega-Perez I, Redondo JM.

The Journal of Biological Chemistry 2005 Mar; 280(11):9980.

- [Regulation of NF-kappaB activation by protein phosphatase 2B and NO, via protein kinase A activity, in human monocytes.](#)

Bengoechea-Alonso MT, Pelacho B, Oses-Prieto JA, Santiago E, Lopez-Moratalla N, Lopez-Zabalza MJ.

Nitric Oxide 2003 Feb; 8(1):65.

- [Inherent calcineurin inhibitor FKBP38 targets Bcl-2 to mitochondria and inhibits apoptosis.](#)

Shirane M, Nakayama KI.

Nature Cell Biology 2003 Jan; 5(1):28.

Application: IP-WB, Human, HeLa cells

Pathway

- [Amyotrophic lateral sclerosis \(ALS\)](#)
- [Apoptosis](#)
- [Axon guidance](#)
- [B cell receptor signaling pathway](#)
- [Calcium signaling pathway](#)
- [Long-term potentiation](#)
- [MAPK signaling pathway](#)
- [Natural killer cell mediated cytotoxicity](#)
- [T cell receptor signaling pathway](#)
- [VEGF signaling pathway](#)
- [Wnt signaling pathway](#)

Disease

- [Alzheimer Disease](#)
- [Cardiovascular Diseases](#)
- [Diabetes Mellitus](#)
- [Edema](#)
- [Genetic Predisposition to Disease](#)
- [Kidney Failure](#)
- [Parkinson disease](#)
- [Tobacco Use Disorder](#)