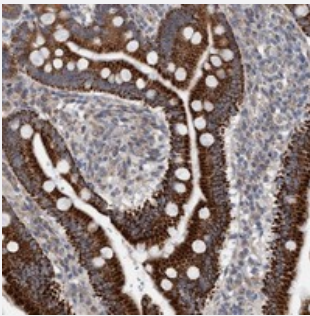


# ZNF566 polyclonal antibody

Catalog # PAB21574      Size 100 uL

## Applications



### Immunohistochemistry (Formalin/PFA-fixed paraffin-embedded sections)

Immunohistochemical staining of human duodenum with ZNF566 polyclonal antibody (Cat # PAB21574) strong cytoplasmic positivity in glandular cells.

## Specification

Product Description	Rabbit polyclonal antibody raised against recombinant ZNF566.
Immunogen	Recombinant protein corresponding to amino acids of human ZNF566.
Sequence	FQCSSFRDDWECNRQFKKELGSQGGHFNQLVFTHEDLPTLSHHPSFTLQQIINSKKKFCASKEY RKTFRHGSQFATHEIIHTIEK
Host	Rabbit
Reactivity	Human
Form	Liquid
Purification	Antigen affinity purification
Isotype	IgG
Recommend Usage	Immunohistochemistry (1:200-1:500) The optimal working dilution should be determined by the end user.
Storage Buffer	In PBS, pH 7.2 (40% glycerol, 0.02% sodium azide)

**Storage Instruction**

Store at 4°C. For long term storage store at -20°C.  
Aliquot to avoid repeated freezing and thawing.

**Note**

This product contains sodium azide: a POISONOUS AND HAZARDOUS SUBSTANCE which should be handled by trained staff only.

## Applications

- Immunohistochemistry (Formalin/PFA-fixed paraffin-embedded sections)

Immunohistochemical staining of human duodenum with ZNF566 polyclonal antibody (Cat # PAB21574) strong cytoplasmic positivity in glandular cells.

## Gene Info — ZNF566

**Entrez GeneID** [84924](#)

**Protein Accession#** [Q969W8](#)

**Gene Name** ZNF566

**Gene Alias** FLJ14779, MGC12515

**Gene Description** zinc finger protein 566

**Gene Ontology** [Hyperlink](#)

**Other Designations** -