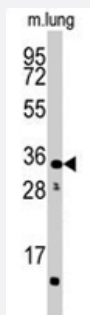


CTDSP2 polyclonal antibody

Catalog # PAB2157

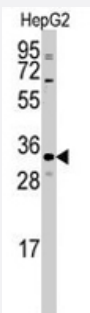
Size 400 uL

Applications



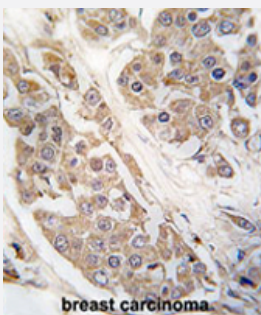
Western Blot (Tissue lysate)

Western blot analysis of CTDSP2 polyclonal antibody (Cat # PAB2157) in mouse lung tissue lysates (35 ug/lane). CTDSP2 (arrow) was detected using the purified Polyclonal antibody.



Western Blot (Cell lysate)

Western blot analysis of CTDSP2 polyclonal antibody (Cat # PAB2157) in HepG2 cell line lysates (35 ug/lane). CTDSP2 (arrow) was detected using the purified Polyclonal antibody.



Immunohistochemistry (Formalin/PFA-fixed paraffin-embedded sections)

Formalin-fixed and paraffin-embedded human breast carcinoma tissue reacted with CTDSP2 polyclonal antibody (Cat # PAB2157), which was peroxidase-conjugated to the secondary antibody, followed by DAB staining. This data demonstrates the use of this antibody for immunohistochemistry; clinical relevance has not been evaluated.

Specification

Product Description

Rabbit polyclonal antibody raised against synthetic peptide of CTDSP2.

Immunogen

A synthetic peptide (conjugated with KLH) corresponding to N-terminus of human CTDSP2.

Host	Rabbit
Reactivity	Human, Mouse
Form	Liquid
Purification	Ammonium sulfate precipitation
Recommend Usage	Western Blot (1:1000) Immunohistochemistry (1:50-100) The optimal working dilution should be determined by the end user.
Storage Buffer	In PBS (0.09% sodium azide)
Storage Instruction	Store at 4°C. For long term storage store at -20°C. Aliquot to avoid repeated freezing and thawing.
Note	This product contains sodium azide: a POISONOUS AND HAZARDOUS SUBSTANCE which should be handled by trained staff only.

Applications

- Western Blot (Tissue lysate)

Western blot analysis of CTDSP2 polyclonal antibody (Cat # PAB2157) in mouse lung tissue lysates (35 ug/lane). CTDSP2 (arrow) was detected using the purified Polyclonal antibody.

- Western Blot (Cell lysate)

Western blot analysis of CTDSP2 polyclonal antibody (Cat # PAB2157) in HepG2 cell line lysates (35 ug/lane). CTDSP2 (arrow) was detected using the purified Polyclonal antibody.

- Immunohistochemistry (Formalin/PFA-fixed paraffin-embedded sections)

Formalin-fixed and paraffin-embedded human breast carcinoma tissue reacted with CTDSP2 polyclonal antibody (Cat # PAB2157), which was peroxidase-conjugated to the secondary antibody, followed by DAB staining.
This data demonstrates the use of this antibody for immunohistochemistry; clinical relevance has not been evaluated.

Gene Info — CTDSP2

Entrez GeneID	10106
Protein Accession#	NP_005721;Q53ZR2
Gene Name	CTDSP2
Gene Alias	OS4, PSR2, SCP2

Gene Description	CTD (carboxy-terminal domain, RNA polymerase II, polypeptide A) small phosphatase 2
Omim ID	608711
Gene Ontology	Hyperlink
Gene Summary	RNA polymerase II
Other Designations	NLI-interacting factor 2 conserved gene amplified in osteosarcoma nuclear LIM interactor-interacting factor 2 small CTD phosphatase 2

Publication Reference

- [A novel RNA polymerase II C-terminal domain phosphatase that preferentially dephosphorylates serine 5.](#)

Yeo M, Lin PS, Dahmus ME, Gill GN.

The Journal of Biological Chemistry 2003 Jul; 278(28):26078.

- [Characterization of a highly conserved gene \(OS4\) amplified with CDK4 in human sarcomas.](#)

Su YA, Lee MM, Hutter CM, Meltzer PS.

Oncogene 1997 Sep; 15(11):1289.

- [A strategy for cloning the hereditary hemochromatosis gene.](#)

Beutler E, Gelbart T, West C, Kuhl W, Lee P.

Blood Cells, Molecules & Diseases 1995 Jan; 21(3):207.