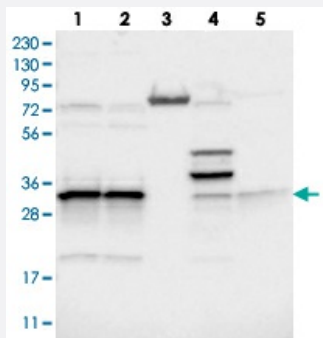


MRPL45 polyclonal antibody

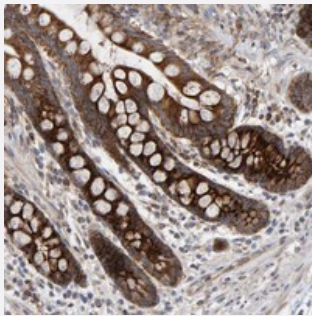
Catalog # PAB21564 Size 100 uL

Applications



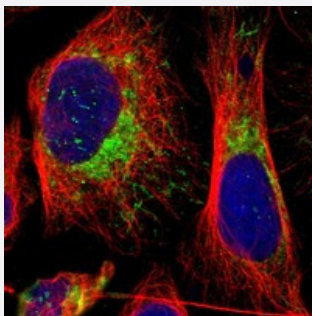
Western Blot

Western blot analysis of Lane 1: RT-4, Lane 2: U-251 MG, Lane 3: Human Plasma, Lane 4: Liver, Lane 5: Tonsil with MRPL45 polyclonal antibody (Cat # PAB21564) at 1:250-1:500 dilution.



Immunohistochemistry (Formalin/PFA-fixed paraffin-embedded sections)

Immunohistochemical staining of human colon with MRPL45 polyclonal antibody (Cat # PAB21564) strong cytoplasmic positivity in glandular cells at 1:500-1:1000 dilution.



Immunofluorescence

Immunofluorescent staining of human cell line U-2 OS with MRPL45 polyclonal antibody (Cat # PAB21564) at 1-4 ug/mL dilution shows positivity in mitochondria.

Specification

Product Description

Rabbit polyclonal antibody raised against recombinant MRPL45.

Immunogen

Recombinant protein corresponding to amino acids of human MRPL45.

Sequence	GIFDAYVPPEGDARISLSKEGLIERTERMKKTMASQVSIRRIKDYDANFKIKDFPEKAKDIFIEAHLCLNNSDHD
Host	Rabbit
Reactivity	Human
Form	Liquid
Purification	Antigen affinity purification
Isotype	IgG
Recommend Usage	Immunohistochemistry (1:500-1:1000) Western Blot (1:250-1:500) Immunofluorescence (1-4 ug/mL) The optimal working dilution should be determined by the end user.
Storage Buffer	In PBS, pH 7.2 (40% glycerol, 0.02% sodium azide)
Storage Instruction	Store at 4°C. For long term storage store at -20°C. Aliquot to avoid repeated freezing and thawing.
Note	This product contains sodium azide: a POISONOUS AND HAZARDOUS SUBSTANCE which should be handled by trained staff only.

Applications

- Western Blot

Western blot analysis of Lane 1: RT-4, Lane 2: U-251 MG, Lane 3: Human Plasma, Lane 4: Liver, Lane 5: Tonsil with MRPL45 polyclonal antibody (Cat # PAB21564) at 1:250-1:500 dilution.

- Immunohistochemistry (Formalin/PFA-fixed paraffin-embedded sections)

Immunohistochemical staining of human colon with MRPL45 polyclonal antibody (Cat # PAB21564) strong cytoplasmic positivity in glandular cells at 1:500-1:1000 dilution.

- Immunofluorescence

Immunofluorescent staining of human cell line U-2 OS with MRPL45 polyclonal antibody (Cat # PAB21564) at 1-4 ug/mL dilution shows positivity in mitochondria.

Gene Info — MRPL45

Entrez GeneID [84311](#)

Protein Accession# [Q9BRJ2](#)

Gene Name	MRPL45
Gene Alias	MGC11321
Gene Description	mitochondrial ribosomal protein L45
Gene Ontology	Hyperlink
Gene Summary	<p>Mammalian mitochondrial ribosomal proteins are encoded by nuclear genes and help in protein synthesis within the mitochondrion. Mitochondrial ribosomes (mitoribosomes) consist of a small 28S subunit and a large 39S subunit. They have an estimated 75% protein to rRNA composition compared to prokaryotic ribosomes, where this ratio is reversed. Another difference between mammalian mitoribosomes and prokaryotic ribosomes is that the latter contain a 5S rRNA. Among different species, the proteins comprising the mitoribosome differ greatly in sequence, and sometimes in biochemical properties, which prevents easy recognition by sequence homology. This gene encodes a 39S subunit protein. Pseudogenes corresponding to this gene are found on chromosomes 2p and 17q. [provided by RefSeq]</p>
Other Designations	-