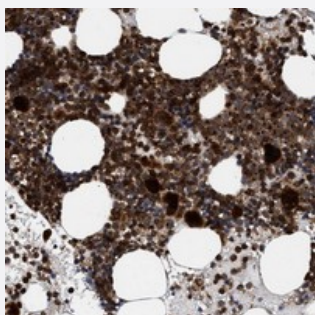


# FAM166A polyclonal antibody

Catalog # PAB21555      Size 100 uL

## Applications



### Immunohistochemistry (Formalin/PFA-fixed paraffin-embedded sections)

Immunohistochemical staining of human bone marrow with FAM166A polyclonal antibody (Cat # PAB21555) shows strong cytoplasmic positivity in bone marrow poietic cells.

## Specification

Product Description	Rabbit polyclonal antibody raised against recombinant FAM166A.
Immunogen	Recombinant protein corresponding to amino acids of human FAM166A.
Sequence	PGVENIPRQILLPAGFTPDTPHPPCPPGRKGDSRDLGHPVYGEEAWKSATPVCEAPRQHQLYHC QRDEYPPPARRRQETLDVGSFQ
Host	Rabbit
Reactivity	Human
Form	Liquid
Purification	Antigen affinity purification
Isotype	IgG
Recommend Usage	Immunohistochemistry (1:50-1:200) The optimal working dilution should be determined by the end user.
Storage Buffer	In PBS, pH 7.2 (40% glycerol, 0.02% sodium azide)

**Storage Instruction**

Store at 4°C. For long term storage store at -20°C.  
Aliquot to avoid repeated freezing and thawing.

**Note**

This product contains sodium azide: a POISONOUS AND HAZARDOUS SUBSTANCE which should be handled by trained staff only.

## Applications

- Immunohistochemistry (Formalin/PFA-fixed paraffin-embedded sections)

Immunohistochemical staining of human bone marrow with FAM166A polyclonal antibody (Cat # PAB21555) shows strong cytoplasmic positivity in bone marrow poietic cells.

## Gene Info — FAM166A

**Entrez GeneID** [401565](#)

**Protein Accession#** [Q6J272](#)

**Gene Name** FAM166A

**Gene Alias** FLJ40100, HSD46

**Gene Description** family with sequence similarity 166, member A

**Gene Ontology** [Hyperlink](#)

**Gene Summary** O

**Other Designations** hypothetical protein LOC401565