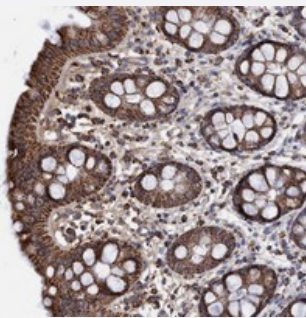


# DSCR3 polyclonal antibody

Catalog # PAB21553      Size 100 uL

## Applications



### Immunohistochemistry (Formalin/PFA-fixed paraffin-embedded sections)

Immunohistochemical staining of human rectum with DSCR3 polyclonal antibody (Cat # PAB21553) shows strong cytoplasmic positivity in granular pattern in glandular cells.

## Specification

Product Description	Rabbit polyclonal antibody raised against recombinant DSCR3.
Immunogen	Recombinant protein corresponding to amino acids of human DSCR3.
Sequence	GKFPSPGKTEIPFEFPLHLKGKVLVYETVYHGVFVNIQYTLRCMDMKRSLAKDLTKTCEFVHSAPQKGKFTSPSPV
Host	Rabbit
Reactivity	Human
Form	Liquid
Purification	Antigen affinity purification
Isotype	IgG
Recommend Usage	Immunohistochemistry (1:200-1:500) The optimal working dilution should be determined by the end user.
Storage Buffer	In PBS, pH 7.2 (40% glycerol, 0.02% sodium azide)

**Storage Instruction**

Store at 4°C. For long term storage store at -20°C.  
Aliquot to avoid repeated freezing and thawing.

**Note**

This product contains sodium azide: a POISONOUS AND HAZARDOUS SUBSTANCE which should be handled by trained staff only.

## Applications

- Immunohistochemistry (Formalin/PFA-fixed paraffin-embedded sections)

Immunohistochemical staining of human rectum with DSCR3 polyclonal antibody (Cat # PAB21553) shows strong cytoplasmic positivity in granular pattern in glandular cells.

## Gene Info — DSCR3

**Entrez GeneID**[10311](#)**Protein Accession#**[O14972](#)**Gene Name**

DSCR3

**Gene Alias**

DCRA, DSCRA, MGC117385

**Gene Description**

Down syndrome critical region gene 3

**Omim ID**[605298](#)**Gene Ontology**[Hyperlink](#)**Gene Summary**

The region of chromosome 21 between genes CBR and ERG (CBR-ERG region), which spans 2.5 Mb on 21q22.2, has been defined by analysis of patients with partial trisomy 21. It contributes significantly to the pathogenesis of many characteristics of Down syndrome, including morphological features, hypotonia, and mental retardation. The DSCR3 (Down syndrome critical region gene 3) gene is found in this region and is predicted to contain eight exons. DSCR3 is expressed in most tissues examined. [provided by RefSeq]

**Other Designations**

Down syndrome critical region protein 3|Down syndrome critical region protein A