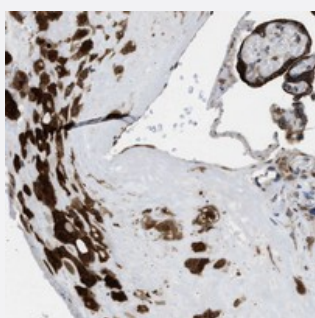


SLC38A10 polyclonal antibody

Catalog # PAB21542 Size 100 uL

Applications



Immunohistochemistry (Formalin/PFA-fixed paraffin-embedded sections)

Immunohistochemical staining of human placenta with SLC38A10 polyclonal antibody (Cat # PAB21542) strong cytoplasmic and nuclear positivity in decidual cells.

Specification

Product Description	Rabbit polyclonal antibody raised against recombinant SLC38A10.
Immunogen	Recombinant protein corresponding to amino acids of human SLC38A10.
Sequence	MKPKQVSRDLGLAADLPGGAEGAAAQPQAVLRQPELRVISDGEQGGQQGHRLDHGGHLEMRA
Host	Rabbit
Reactivity	Human
Form	Liquid
Purification	Antigen affinity purification
Isotype	IgG
Recommend Usage	Immunohistochemistry (1:50-1:200) The optimal working dilution should be determined by the end user.
Storage Buffer	In PBS, pH 7.2 (40% glycerol, 0.02% sodium azide)

Storage Instruction

Store at 4°C. For long term storage store at -20°C.
Aliquot to avoid repeated freezing and thawing.

Note

This product contains sodium azide: a POISONOUS AND HAZARDOUS SUBSTANCE which should be handled by trained staff only.

Applications

- Immunohistochemistry (Formalin/PFA-fixed paraffin-embedded sections)

Immunohistochemical staining of human placenta with SLC38A10 polyclonal antibody (Cat # PAB21542) strong cytoplasmic and nuclear positivity in decidual cells.

Gene Info — SLC38A10

Entrez GeneID[124565](#)**Protein Accession#**[Q9HBR0](#)**Gene Name**

SLC38A10

Gene Alias

FLJ35718, MGC15523, PP1744

Gene Description

solute carrier family 38, member 10

Gene Ontology[Hyperlink](#)**Gene Summary**

O

Other Designations

-