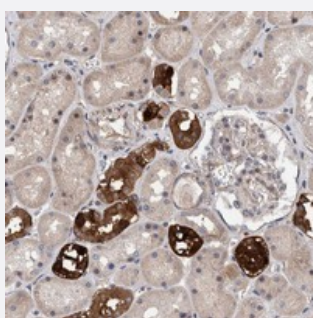


SLC45A4 polyclonal antibody

Catalog # PAB21541 Size 100 uL

Applications



Immunohistochemistry (Formalin/PFA-fixed paraffin-embedded sections)

Immunohistochemical staining of human kidney with SLC45A4 polyclonal antibody (Cat # PAB21541) shows strong cytoplasmic positivity in subsets of renal tubules.

Specification

Product Description	Rabbit polyclonal antibody raised against recombinant SLC45A4.
Immunogen	Recombinant protein corresponding to amino acids of human SLC45A4.
Sequence	NVSEEAKEEQKGLSSPLAGEGRAGGNSEKPTVLKLTRKEGLQGPVETERLQVLTSVRSRHIGWC R
Host	Rabbit
Reactivity	Human
Form	Liquid
Purification	Antigen affinity purification
Isotype	IgG
Recommend Usage	Immunohistochemistry (1:500-1:1000) The optimal working dilution should be determined by the end user.
Storage Buffer	In PBS, pH 7.2 (40% glycerol, 0.02% sodium azide)

Storage Instruction

Store at 4°C. For long term storage store at -20°C.
Aliquot to avoid repeated freezing and thawing.

Note

This product contains sodium azide: a POISONOUS AND HAZARDOUS SUBSTANCE which should be handled by trained staff only.

Applications

- Immunohistochemistry (Formalin/PFA-fixed paraffin-embedded sections)

Immunohistochemical staining of human kidney with SLC45A4 polyclonal antibody (Cat # PAB21541) shows strong cytoplasmic positivity in subsets of renal tubules.

Gene Info — SLC45A4

Entrez GeneID[57210](#)**Protein Accession#**[Q5BKX6](#)**Gene Name**

SLC45A4

Gene Alias

KIAA1126

Gene Description

solute carrier family 45, member 4

Gene Ontology[Hyperlink](#)**Gene Summary**

O

Other Designations

-