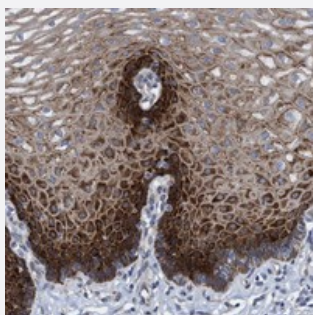


R3HCC1 polyclonal antibody

Catalog # PAB21540

Size 100 uL

Applications



Immunohistochemistry (Formalin/PFA-fixed paraffin-embedded sections)

Immunohistochemical staining of human esophagus with R3HCC1 polyclonal antibody (Cat # PAB21540) shows strong cytoplasmic positivity in squamous epithelial cells.

Specification

Product Description	Rabbit polyclonal antibody raised against recombinant R3HCC1.
Immunogen	Recombinant protein corresponding to amino acids of human R3HCC1.
Sequence	ENDFVHRIQEELDRFLLQKQLSKVLLFPPLSSRLRYLIHRTAENFDLLSSFVSGEGWKRRTVICHQ DIRVPSSDGLSGPCRAPASCPSRYHGPRPISNQG
Host	Rabbit
Reactivity	Human
Form	Liquid
Purification	Antigen affinity purification
Isotype	IgG
Recommend Usage	Immunohistochemistry (1:50-1:200) The optimal working dilution should be determined by the end user.
Storage Buffer	In PBS, pH 7.2 (40% glycerol, 0.02% sodium azide)

Storage Instruction

Store at 4°C. For long term storage store at -20°C.
Aliquot to avoid repeated freezing and thawing.

Note

This product contains sodium azide: a POISONOUS AND HAZARDOUS SUBSTANCE which should be handled by trained staff only.

Applications

- Immunohistochemistry (Formalin/PFA-fixed paraffin-embedded sections)

Immunohistochemical staining of human esophagus with R3HCC1 polyclonal antibody (Cat # PAB21540) shows strong cytoplasmic positivity in squamous epithelial cells.

Gene Info — R3HCC1

Entrez GeneID[203069](#)**Protein Accession#**[Q9Y3T6](#)**Gene Name**

R3HCC1

Gene Alias

DKFZp564N123

Gene Description

R3H domain and coiled-coil containing 1

Gene Ontology[Hyperlink](#)**Other Designations**

-

Disease

- [Hyperandrogenism](#)
- [Polycystic Ovary Syndrome](#)
- [Puberty](#)