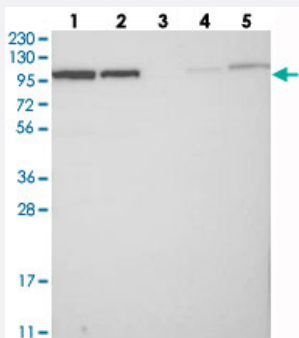


BICD2 polyclonal antibody

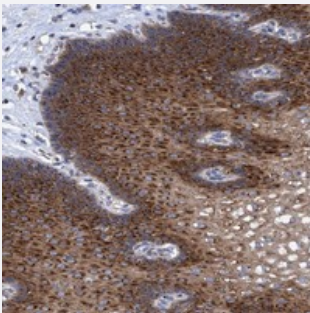
Catalog # PAB21522 Size 100 uL

Applications



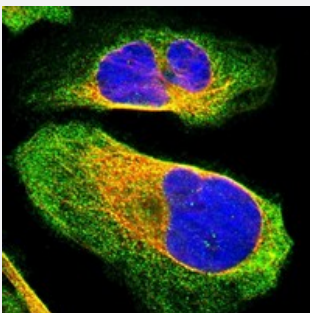
Western Blot

Western blot analysis of Lane 1: RT-4, Lane 2: U-251 MG, Lane 3: Human Plasma, Lane 4: Liver, Lane 5: Tonsil with BICD2 polyclonal antibody (Cat # PAB21522) at 1:250-1:500 dilution.



Immunohistochemistry (Formalin/PFA-fixed paraffin-embedded sections)

Immunohistochemical staining of human esophagus with BICD2 polyclonal antibody (Cat # PAB21522) shows strong cytoplasmic positivity in squamous epithelial cells at 1:200-1:500 dilution.



Immunofluorescence

Immunofluorescent staining of human cell line U-2 OS with BICD2 polyclonal antibody (Cat # PAB21522) at 1-4 ug/mL dilution shows positivity in plasma membrane and cytoplasm.

Specification

Product Description

Rabbit polyclonal antibody raised against recombinant BICD2.

Immunogen

Recombinant protein corresponding to amino acids of human BICD2.

Sequence	MSAPSEEEYARLVMEAQPEWLRAEVKRLSHELAETTREKIQAAEYGLAVLEEKHQLKLQFEEL EVDYEA
Host	Rabbit
Reactivity	Human
Form	Liquid
Purification	Antigen affinity purification
Isotype	IgG
Recommend Usage	Immunohistochemistry (1:200-1:500) Western Blot (1:250-1:500) Immunofluorescence (1-4 ug/mL) The optimal working dilution should be determined by the end user.
Storage Buffer	In PBS, pH 7.2 (40% glycerol, 0.02% sodium azide)
Storage Instruction	Store at 4°C. For long term storage store at -20°C. Aliquot to avoid repeated freezing and thawing.
Note	This product contains sodium azide: a POISONOUS AND HAZARDOUS SUBSTANCE which should be handled by trained staff only.

Applications

- Western Blot

Western blot analysis of Lane 1: RT-4, Lane 2: U-251 MG, Lane 3: Human Plasma, Lane 4: Liver, Lane 5: Tonsil with BICD2 polyclonal antibody (Cat # PAB21522) at 1:250-1:500 dilution.

- Immunohistochemistry (Formalin/PFA-fixed paraffin-embedded sections)

Immunohistochemical staining of human esophagus with BICD2 polyclonal antibody (Cat # PAB21522) shows strong cytoplasmic positivity in squamous epithelial cells at 1:200-1:500 dilution.

- Immunofluorescence

Immunofluorescent staining of human cell line U-2 OS with BICD2 polyclonal antibody (Cat # PAB21522) at 1-4 ug/mL dilution shows positivity in plasma membrane and cytoplasm.

Gene Info — BICD2

Entrez GeneID [23299](#)

Protein Accession# [Q8TD16](#)

Gene Name	BICD2
Gene Alias	KIAA0699, bA526D8.1
Gene Description	bicaudal D homolog 2 (Drosophila)
Omim ID	609797
Gene Ontology	Hyperlink
Gene Summary	<p>This gene is one of two human homologs of Drosophila bicaudal-D and a member of the Bicoid family. It has been implicated in dynein-mediated, minus end-directed motility along microtubules. It has also been reported to be a phosphorylation target of NIMA related kinase 8. Two alternative splice variants have been described. [provided by RefSeq]</p>
Other Designations	OTTHUMP00000022790 OTTHUMP00000022791 bicaudal D homolog 2 coiled-coil protein BICD2 cytoskeleton-like bicaudal D protein homolog 2 homolog of Drosophila bicaudal D