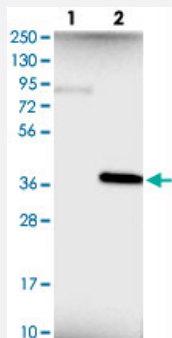


CHMP6 polyclonal antibody

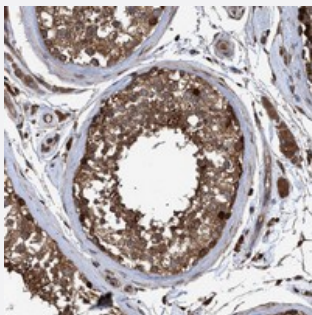
Catalog # PAB21516 Size 100 uL

Applications



Western Blot (Transfected lysate)

Western blot analysis of Lane 1: Negative control (vector only transfected HEK293T lysate), Lane 2: Over-expression Lysate (Co-expressed with a C-terminal myc-DDK tag (~3.1 kDa) in mammalian HEK293T cells) with CHMP6 polyclonal antibody (Cat # PAB21516).



Immunohistochemistry (Formalin/PFA-fixed paraffin-embedded sections)

Immunohistochemical staining of human testis with CHMP6 polyclonal antibody (Cat # PAB21516) shows distinct cytoplasmic positivity in cells of ductus seminiferus.

Specification

Product Description	Rabbit polyclonal antibody raised against recombinant CHMP6.
Immunogen	Recombinant protein corresponding to amino acids of human CHMP6.
Sequence	MGNLFGCKKQSRVTEQDKAILQLKQQRDKLRQYQKRIAQQLERERALARQLLRDGRKERAKLLK KKRYQEQLLDRTENQISSLEAMVQSIEFTQIEMKV
Host	Rabbit
Reactivity	Human
Form	Liquid

Purification	Antigen affinity purification
Isotype	IgG
Recommend Usage	Immunohistochemistry (1:20-1:50) Western Blot (1:250-1:500) The optimal working dilution should be determined by the end user.
Storage Buffer	In PBS, pH 7.2 (40% glycerol, 0.02% sodium azide)
Storage Instruction	Store at 4°C. For long term storage store at -20°C. Aliquot to avoid repeated freezing and thawing.
Note	This product contains sodium azide: a POISONOUS AND HAZARDOUS SUBSTANCE which should be handled by trained staff only.

Applications

- Western Blot (Transfected lysate)

Western blot analysis of Lane 1: Negative control (vector only transfected HEK293T lysate), Lane 2: Over-expression Lysate (Co-expressed with a C-terminal myc-DDK tag (~3.1 kDa) in mammalian HEK293T cells) with CHMP6 polyclonal antibody (Cat # PAB21516).

- Immunohistochemistry (Formalin/PFA-fixed paraffin-embedded sections)

Immunohistochemical staining of human testis with CHMP6 polyclonal antibody (Cat # PAB21516) shows distinct cytoplasmic positivity in cells of ductus seminiferus.

Gene Info — CHMP6

Entrez GeneID	79643
Protein Accession#	Q96FZ7
Gene Name	CHMP6
Gene Alias	FLJ11749, VPS20
Gene Description	chromatin modifying protein 6
Omim ID	610901
Gene Ontology	Hyperlink

Gene Summary

CHMP6 belongs to the chromatin-modifying protein/charged multivesicular body protein (CHMP) family. These proteins are components of ESCRT-III (endosomal sorting complex required for transport III), a complex involved in degradation of surface receptor proteins and formation of endocytic multivesicular bodies (MVBs). Some CHMPs have both nuclear and cytoplasmic/vesicular distributions, and one such CHMP, CHMP1A (MIM 164010), is required for both MVB formation and regulation of cell cycle progression (Tsang et al., 2006 [PubMed 16730941]).[supplied by OMIM]

Other Designations

charged multivesicular body protein 6

Pathway

- [Endocytosis](#)