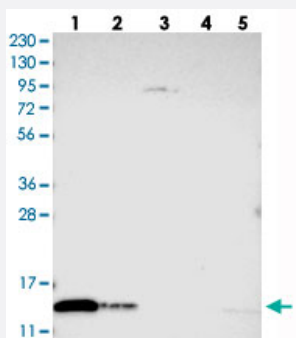


TXNDC17 polyclonal antibody

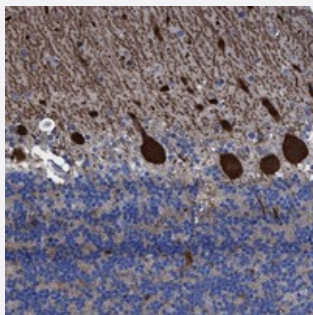
Catalog # PAB21514 Size 100 uL

Applications



Western Blot

Western blot analysis of Lane 1: RT-4, Lane 2: U-251 MG, Lane 3: Human Plasma, Lane 4: Liver, Lane 5: Tonsil with TXNDC17 polyclonal antibody (Cat # PAB21514).



Immunohistochemistry (Formalin/PFA-fixed paraffin-embedded sections)

Immunohistochemical staining of human cerebellum with TXNDC17 polyclonal antibody (Cat # PAB21514) shows strong cytoplasmic positivity in Purkinje cells.

Specification

Product Description	Rabbit polyclonal antibody raised against recombinant TXNDC17.
Immunogen	Recombinant protein corresponding to amino acids of human TXNDC17.
Sequence	MARYEEVS VSGFE EFHRAVEQHNGKTIFAYFTGSKDAGGKSWCPDCVQAEPVVREGLKHISE
Host	Rabbit
Reactivity	Human
Form	Liquid
Purification	Antigen affinity purification

Isotype	IgG
Recommend Usage	Immunohistochemistry (1:200-1:500) Western Blot (1:250-1:500) The optimal working dilution should be determined by the end user.
Storage Buffer	In PBS, pH 7.2 (40% glycerol, 0.02% sodium azide)
Storage Instruction	Store at 4°C. For long term storage store at -20°C. Aliquot to avoid repeated freezing and thawing.
Note	This product contains sodium azide: a POISONOUS AND HAZARDOUS SUBSTANCE which should be handled by trained staff only.

Applications

- Western Blot

Western blot analysis of Lane 1: RT-4, Lane 2: U-251 MG, Lane 3: Human Plasma, Lane 4: Liver, Lane 5: Tonsil with TXNDC17 polyclonal antibody (Cat # PAB21514).

- Immunohistochemistry (Formalin/PFA-fixed paraffin-embedded sections)

Immunohistochemical staining of human cerebellum with TXNDC17 polyclonal antibody (Cat # PAB21514) shows strong cytoplasmic positivity in Purkinje cells.

Gene Info — TXNDC17

Entrez GeneID	84817
Protein Accession#	Q9BRA2
Gene Name	TXNDC17
Gene Alias	MGC14353, TRP14, TXNL5
Gene Description	thioredoxin domain containing 17
Gene Ontology	Hyperlink
Gene Summary	14 kDa thioredoxin-like 5
Other Designations	thioredoxin (Trx)-related protein, 14 kDa thioredoxin-like 5