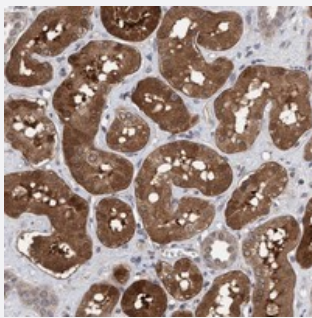


C9orf97 polyclonal antibody

Catalog # PAB21500 Size 100 uL

Applications



Immunohistochemistry (Formalin/PFA-fixed paraffin-embedded sections)

Immunohistochemical staining of human kidney with C9orf97 polyclonal antibody (Cat # PAB21500) shows strong cytoplasmic and nuclear positivity in proximal tubules at 1:50-1:200 dilution.

Specification

Product Description	Rabbit polyclonal antibody raised against recombinant C9orf97.
Immunogen	Recombinant protein corresponding to amino acids of human C9orf97.
Sequence	MPSSTSPDQGDDLENCILRFSDLDLKDMSLINPSSSLKAELDGSTKKKYSFAKKKAFALFVKTKEVPTKRSEFECKELWKCCQQLFTDQTSIHRHVATQHADEIYHQT
Host	Rabbit
Reactivity	Human
Form	Liquid
Purification	Antigen affinity purification
Isotype	IgG
Recommend Usage	Immunohistochemistry (1:50-1:200) The optimal working dilution should be determined by the end user.
Storage Buffer	In PBS, pH 7.2 (40% glycerol, 0.02% sodium azide)

Storage Instruction

Store at 4°C. For long term storage store at -20°C.
Aliquot to avoid repeated freezing and thawing.

Note

This product contains sodium azide: a POISONOUS AND HAZARDOUS SUBSTANCE which should be handled by trained staff only.

Applications

- Immunohistochemistry (Formalin/PFA-fixed paraffin-embedded sections)

Immunohistochemical staining of human kidney with C9orf97 polyclonal antibody (Cat # PAB21500) shows strong cytoplasmic and nuclear positivity in proximal tubules at 1:50-1:200 dilution.

Gene Info — C9orf97

Entrez GeneID[158427](#)**Protein Accession#**[Q5T7W7](#)**Gene Name**

C9orf97

Gene Alias

FLJ36724

Gene Description

chromosome 9 open reading frame 97

Gene Ontology[Hyperlink](#)**Other Designations**

PP4189|hypothetical protein LOC158427