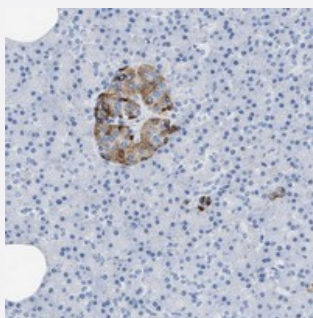


SLFN13 polyclonal antibody

Catalog # PAB21499 Size 100 uL

Applications



Immunohistochemistry (Formalin/PFA-fixed paraffin-embedded sections)

Immunohistochemical staining of human pancreas with SLFN13 polyclonal antibody (Cat # PAB21499) shows moderate cytoplasmic positivity in islet cells.

Specification

Product Description	Rabbit polyclonal antibody raised against recombinant SLFN13.
Immunogen	Recombinant protein corresponding to amino acids of human SLFN13.
Sequence	VLGCAKEQVDPDSLKNVIARAISKLPVHFCSSKPRVEYSTKIVEVFCGKELYGYLCVIKVKAFCCV VFSEAPK
Host	Rabbit
Reactivity	Human
Form	Liquid
Purification	Antigen affinity purification
Isotype	IgG
Recommend Usage	Immunohistochemistry (1:50-1:200) The optimal working dilution should be determined by the end user.
Storage Buffer	In PBS, pH 7.2 (40% glycerol, 0.02% sodium azide)

Storage Instruction

Store at 4°C. For long term storage store at -20°C.
Aliquot to avoid repeated freezing and thawing.

Note

This product contains sodium azide: a POISONOUS AND HAZARDOUS SUBSTANCE which should be handled by trained staff only.

Applications

- Immunohistochemistry (Formalin/PFA-fixed paraffin-embedded sections)

Immunohistochemical staining of human pancreas with SLFN13 polyclonal antibody (Cat # PAB21499) shows moderate cytoplasmic positivity in islet cells.

Gene Info — SLFN13

Entrez GeneID[146857](#)**Protein Accession#**[Q68D06](#)**Gene Name**

SLFN13

Gene Alias

DKFZp666J196, DKFZp686I026, FLJ31952, SLFN10

Gene Description

schlafen family member 13

Gene Ontology[Hyperlink](#)**Other Designations**

-