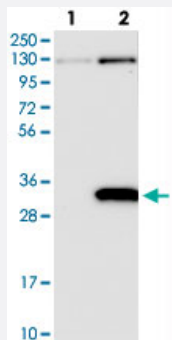


PRUNE2 polyclonal antibody

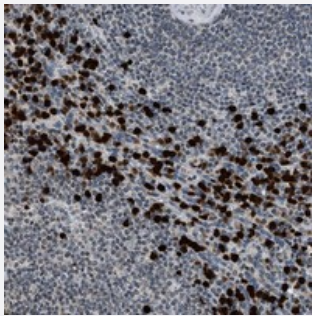
Catalog # PAB21497 Size 100 uL

Applications



Western Blot (Transfected lysate)

Western blot analysis of Lane 1: Negative control (vector only transfected HEK293T lysate), Lane 2: Over-expression Lysate (Co-expressed with a C-terminal myc-DDK tag (~3.1 kDa) in mammalian HEK293T cells) with PRUNE2 polyclonal antibody (Cat # PAB21497).



Immunohistochemistry (Formalin/PFA-fixed paraffin-embedded sections)

Immunohistochemical staining of human spleen with PRUNE2 polyclonal antibody (Cat # PAB21497) shows strong nuclear and cytoplasmic positivity in cells of the red pulp.

Specification

Product Description	Rabbit polyclonal antibody raised against recombinant PRUNE2.
Immunogen	Recombinant protein corresponding to amino acids of human PRUNE2.
Sequence	LNDEGKLSITLVGSSVLASEDKTLESVVKVINPVEQSDANVEFRESSSSSLVLKEILQEAPELITEQ LAHRLRGSILFKWMT
Host	Rabbit
Reactivity	Human
Form	Liquid

Purification	Antigen affinity purification
Isotype	IgG
Recommend Usage	Immunohistochemistry (1:500-1:1000) Western Blot (1:250-1:500) The optimal working dilution should be determined by the end user.
Storage Buffer	In PBS, pH 7.2 (40% glycerol, 0.02% sodium azide)
Storage Instruction	Store at 4°C. For long term storage store at -20°C. Aliquot to avoid repeated freezing and thawing.
Note	This product contains sodium azide: a POISONOUS AND HAZARDOUS SUBSTANCE which should be handled by trained staff only.

Applications

- Western Blot (Transfected lysate)

Western blot analysis of Lane 1: Negative control (vector only transfected HEK293T lysate), Lane 2: Over-expression Lysate (Co-expressed with a C-terminal myc-DDK tag (~3.1 kDa) in mammalian HEK293T cells) with PRUNE2 polyclonal antibody (Cat # PAB21497).

- Immunohistochemistry (Formalin/PFA-fixed paraffin-embedded sections)

Immunohistochemical staining of human spleen with PRUNE2 polyclonal antibody (Cat # PAB21497) shows strong nuclear and cytoplasmic positivity in cells of the red pulp.

Gene Info — PRUNE2

Entrez GeneID	158471
Protein Accession#	Q8WUY3
Gene Name	PRUNE2
Gene Alias	A214N16.3, BMCC1, BNIPXL, C9orf65, DKFZp762K117, FLJ50060, FLJ54876, FLJ59118, KIAA0367, RP11-58J3.2, bA214N16.3
Gene Description	prune homolog 2 (Drosophila)
Omim ID	610691
Gene Ontology	Hyperlink
Other Designations	BCH motif-containing molecule at the carboxyl terminal region 1 BNIP2 motif containing molecule at the carboxyl terminal region 1 OTTHUMP00000021508 prune homolog 2

Disease

- [Tobacco Use Disorder](#)