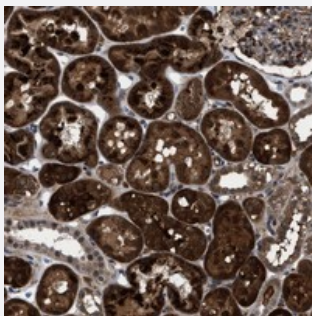


# C9orf9 polyclonal antibody

Catalog # PAB21480      Size 100 uL

## Applications



### Immunohistochemistry (Formalin/PFA-fixed paraffin-embedded sections)

Immunohistochemical staining of human kidney with C9orf9 polyclonal antibody (Cat # PAB21480) shows strong cytoplasmic positivity in tubular cells.

## Specification

Product Description	Rabbit polyclonal antibody raised against recombinant C9orf9.
Immunogen	Recombinant protein corresponding to amino acids of human C9orf9.
Sequence	MNEVKESLRSIEQKYKLFQQQQLTFTAALHCRENAHDKIRPISSIGQVQSYMEHYCNSSTDRRL LMFLDICSELNKLCHFE
Host	Rabbit
Reactivity	Human
Form	Liquid
Purification	Antigen affinity purification
Isotype	IgG
Recommend Usage	Immunohistochemistry (1:50-1:200) The optimal working dilution should be determined by the end user.
Storage Buffer	In PBS, pH 7.2 (40% glycerol, 0.02% sodium azide)

**Storage Instruction**

Store at 4°C. For long term storage store at -20°C.  
Aliquot to avoid repeated freezing and thawing.

**Note**

This product contains sodium azide: a POISONOUS AND HAZARDOUS SUBSTANCE which should be handled by trained staff only.

## Applications

- Immunohistochemistry (Formalin/PFA-fixed paraffin-embedded sections)

Immunohistochemical staining of human kidney with C9orf9 polyclonal antibody (Cat # PAB21480) shows strong cytoplasmic positivity in tubular cells.

## Gene Info — C9orf9

**Entrez GeneID**[11092](#)**Protein Accession#**[Q96E40](#)**Gene Name**

C9orf9

**Gene Alias**

FLJ26879

**Gene Description**

chromosome 9 open reading frame 9

**Gene Ontology**[Hyperlink](#)**Other Designations**

OTTHUMP00000022442|Rsb-66 protein|Rsb66 homolog